

Mulching Baffle Kit Land Pride Zero Turn Mower



Manual No. 357-307M

Z48, Z54, ZSR54, ZSR60, (ZXT54 & ZXT60 S/N 664617+), & (ZT60i, ZT72i S/N 748109-)

Before You Start



When you see this symbol, the subsequent instructions and warnings are serious - follow without exception. Your life and the lives of others depend on it!

IMPORTANT: Before you begin, read these instructions and check to be sure all parts and tools are accounted for. Please retain these installation instructions for future reference and parts ordering information.

Your Land Pride Mulching Baffle Kit is exclusively designed for your Land Pride Zero Turn mower. Please read these installation instructions and the vehicle Operator's Manual thoroughly before beginning. Especially read information relating to safety concerns. Also included in the Operator's Manual is important information on operation, adjustment, troubleshooting, and maintenance for this attachment (some manual sections do not apply to all accessories).

A separate Parts Manual for replacement parts can be purchased from your nearest Land Pride dealer or downloaded free of charge from our web site at www.landpride.com. Have model and serial numbers handy when placing an order.

Manual Part Numbers:

- Operator's Manual (Z & ZSR) 357-344M
- Parts Manual (Z48 & Z54) 357-344P
- Parts Manual (ZSR54 & ZSR60) 357-388P
- Operator's Manual (ZXT54 & ZXT60) . . 357-271M
- Parts Manual (ZXT54 & ZXT60) 357-271P
- Operator's Manual (ZT60i & ZT72i) 357-398M
- Parts Manual (ZT60i & ZT72i) 357-398P

General Information

These assembly instructions apply to the following Mulching Baffle Kits listed below.

- 357-364A** **MULCH KIT, 48 IN**
- 357-361A** **MULCH KIT, 54 IN**
- 357-358A** **MULCH KIT, 60 IN**
- 357-403A** **MULCH KIT, ZT72i**

Tools required

- Safety glasses
- Work gloves
- Drive Punch
- Torque wrench with 1/2" & 9/16" sockets
- Hammer
- 9/16" wrench
- 1/2" wrench

Definitions

Right-hand and left-hand as used in this manual is determined by facing the direction the machine will operate while in use unless otherwise stated.

357-364A Z48 MULCHING BAFFLE KIT			
Your kit includes: (Note: Blades Are Not Included)			
Item	Qty.	Part No.	Part Description
1	2	357-362H	MULCH BAFFLE, 48 IN, RAZOR
2	1	357-363H	MULCH PLUG, 48 IN, RAZOR
3	2	802-015C	RHSNB 3/8-16x1 GR5
4	4	802-092C	RHSNB 5/16-18x3/4 GR5
5	4	803-043C	NUT HEX WHIZ 5/16-18 PLT
6	2	803-209C	NUT FLANGE LOCK 3/8-16 PLT1
7	1	357-938D	MULCH PLUG COVER
		357-307M	MANUAL

357-361A Z54, ZSR54 & ZXT54 MULCHING BAFFLE KIT			
Your kit includes: (Note: Blades Are Not Included)			
Item	Qty.	Part No.	Part Description
1	2	357-359H	MULCH BAFFLE, 54 IN, RAZOR
2	1	357-360H	MULCH PLUG, 54 IN, RAZOR
3	2	802-015C	RHSNB 3/8-16x1 GR5
4	4	802-092C	RHSNB 5/16-18x3/4 GR5
5	4	803-043C	NUT HEX WHIZ 5/16-18 PLT
6	2	803-209C	NUT FLANGE LOCK 3/8-16 PLT1
7	1	357-939D	MULCH PLUG COVER
		357-307M	MANUAL

357-358A ZSR60, ZT60i & ZXT60 MULCHING BAFFLE KIT			
Your kit includes: (Note: Blades Are Not Included)			
Item	Qty.	Part No.	Part Description
1	2	357-356H	MULCH BAFFLE, 60 IN, RAZOR
2	1	357-357H	MULCH PLUG, 60 IN, RAZOR
3	2	802-015C	RHSNB 3/8-16x1 GR5
4	4	802-282C	RHSNB 5/16-18x1 GR5
5	4	803-043C	NUT HEX WHIZ 5/16-18 PLT
6	2	803-209C	NUT FLANGE LOCK 3/8-16 PLT1
7	1	357-940D	MULCH PLUG COVER
		357-307M	MANUAL

357-403A ZT72i MULCHING BAFFLE KIT			
Your kit includes: (Note: Blades Are Not Included)			
Item	Qty.	Part No.	Part Description
1	2	357-401H	MULCH BAFFLE, 72i, ZT
2	1	357-402H	MULCH PLUG, 72i, ZT
3	2	802-015C	RHSNB 3/8-16x1 GR5
4	4	802-282C	RHSNB 5/16-18x1 GR5
5	4	803-043C	NUT HEX WHIZ 5/16-18 PLT
6	2	803-209C	NUT FLANGE LOCK 3/8-16 PLT1
7	1	357-931D	MULCH PLUG COVER
		357-307M	MANUAL

Mulching Blade Ordering Information		
Mower Model	Part No.	Includes A Set of 3
Z48	310-465A	16.87" Mulching Blades
Z54, ZXT54, ZSR54	357-631A	18.77" Mulching Blades
ZSR60, ZXT60, ZT60i	310-469A	20.91" Mulching Blades
ZT72i	310-473A	25.00" Mulching Blades

Assembly Instructions

Assembly Instructions

- Z48 Kit No. 357-364A
- Z54, ZSR54 & ZXT54 Kit No. 357-361A
- ZSR60, ZXT6 & ZT60i Kit No. 357-358A
- ZT72i Kit No. 357-403A

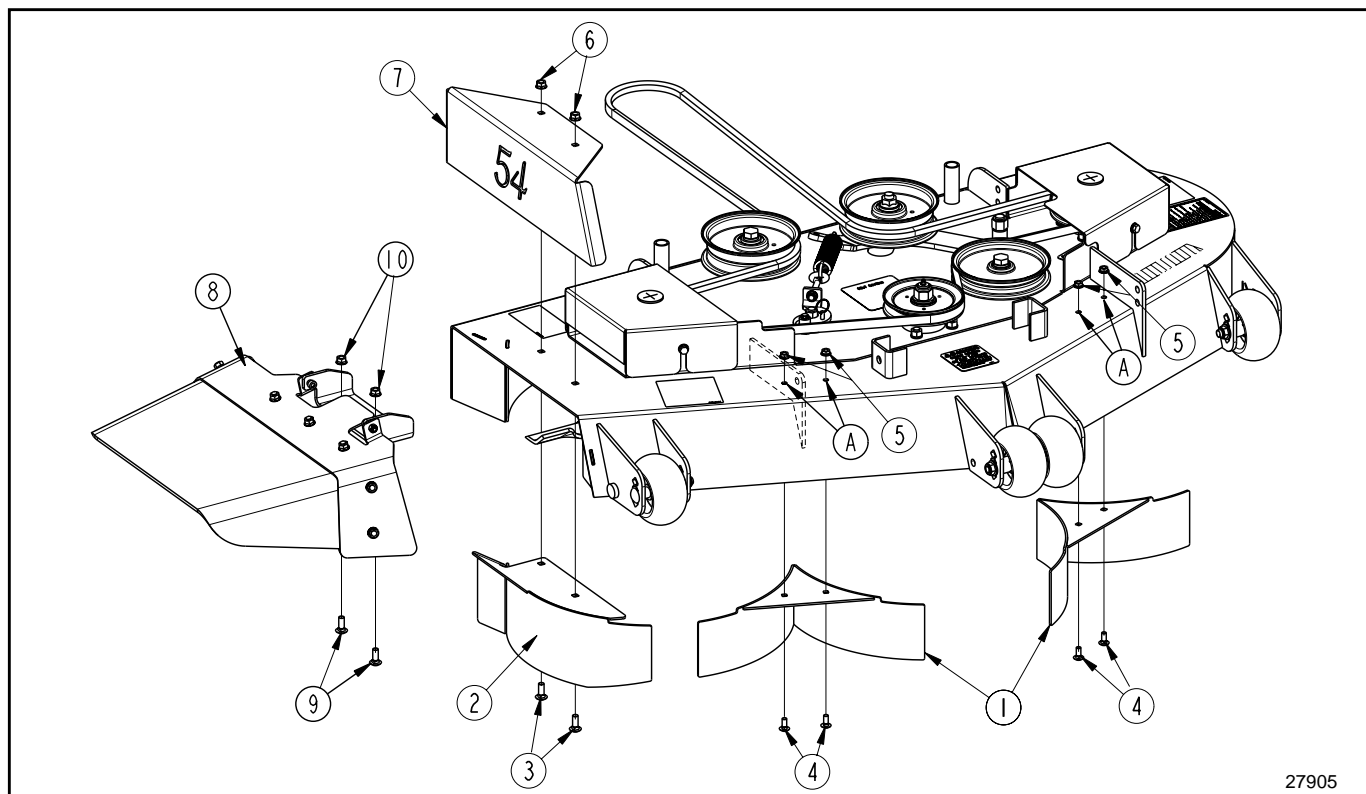
A detailed listing of parts for these Accessory Kits are provided on page 1. Use the list that is for your Mulching Baffle Kit as a checklist to inventory parts received. Please contact your local Land Pride dealer for any missing hardware.

1. Park mower on a flat surface, move control levers fully out, set park brake lever to on, shut engine off and remove spark plug wire from spark plug.
2. Remove floor platform and raise front end of mower enough to allow room to install baffles under the deck.

NOTE: Be sure to properly block mower up so it can not move after it is raised.

Refer to Figure 1:

3. Remove 3/8" flange lock nuts (#10), cap screws (#9) and discharge chute (#8). Store removed parts in a safe location for reinstallation should the baffles ever be removed.
4. Locate pilot holes (A) which have knock-outs in the deck. Punch-out these holes. Make sure knock-outs are completely removed.
5. Mount baffles (#1) to the deck with 5/16"-18 GR5 round head square neck bolts (#4) and secure with 5/16" hex whiz nuts (#5). Tighten nuts to 17 ft-lbs.
6. Mount baffle (#3) and mulching plug cover (#7) to the deck with two 3/8"-16 x 1" GR5 cap screws (#3) and 3/8" hex whiz nuts (#6). Tighten nuts to 31 ft-lbs.
7. Lower unit down to ground and reconnect spark plug wire.



ZSR54 Mulching Baffle Kit Shown
Figure 1



Corporate Office: P.O. Box 5060
Salina, Kansas 67402-5060 USA
www.landpride.com