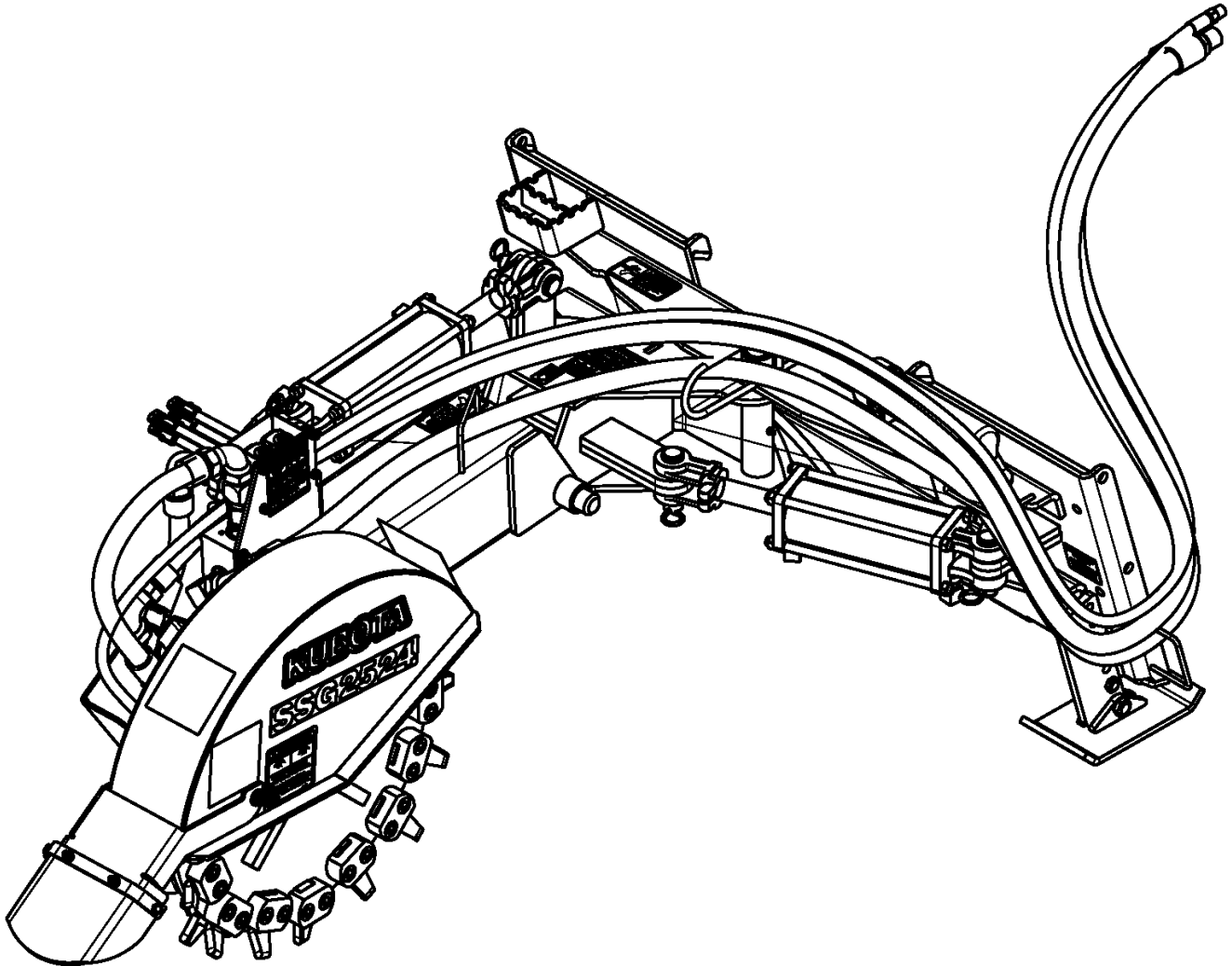


Stump Grinder

AP-SSG2524



37713

328-215PK Parts Manual

Kubota®



Read the Operator's Manual entirely. When you see this symbol, the subsequent instructions and warnings are serious - follow without exception. Your life and the lives of others depend on it!

© Copyright 2020 Printed 11/19/20

Cover photo may show optional equipment not supplied with standard unit.



Table of Contents

| | |
|--|-----------|
| Section 1: Introduction..... | 4 |
| Using This Manual..... | 4 |
| Manual Replacement Information..... | 4 |
| Manual Revisions..... | 4 |
| Touch-up Paint..... | 4 |
| Hardware Legend..... | 5 |
| Replacement Hardware..... | 5 |
| Serial Numbers..... | 5 |
| Part Number Service Coding..... | 5 |
| Section 2: Hitch & Arm Components..... | 6 |
| Hitch..... | 6 |
| Pivot & Arm..... | 6 |
| Manual Tube..... | 8 |
| Section 3: Rotor Components..... | 10 |
| Rotor & Chute Components..... | 10 |
| Rotor Wheel Components..... | 12 |
| Section 4: Hydraulics..... | 14 |
| Hydraulic Cylinder (810-384C) Cross..... | 14 |
| Hydraulic Cylinder (850-449C) Cross..... | 16 |
| Left/Right Rotate Hydraulics..... | 18 |
| Motor Drive Hydraulics..... | 20 |
| Up/Down Tilt Hydraulics..... | 22 |
| Valve 2 Priority (810-840C)..... | 24 |
| Section 5: Decals..... | 26 |
| Decal Placement..... | 26 |
| Touch-up Paints - Kubota..... | 28 |
| Section 6: Options & Accessories..... | 30 |
| 14 Pin Connector Harnesses..... | 30 |
| Case Drain Coupler..... | 32 |
| Case Drain W/ Motor Guard..... | 34 |
| Control Box (823-377C)..... | 36 |
| Control Harness..... | 38 |
| Control Harness Kubota Skid W/ 2-Pin Power Supply..... | 40 |
| Couplers Large Flat Faced..... | 42 |
| Couplers Quick Flat Faced..... | 44 |
| Wiring Harness 14 Pin..... | 46 |
| | |
| Part Number Index..... | 48 |

© Copyright 2020. All rights reserved.

Kubota provides this publication “as is” without warranty of any kind, either expressed or implied. While every precaution has been taken in the preparation of this manual, Kubota assumes no responsibility for errors or omissions. Neither is any liability assumed for damages resulting from the use of the information contained herein. Kubota reserves the right to revise and improve its products as it sees fit. This publication describes the state of this product at the time of its publication, and may not reflect the product in the future. The illustrations in this manual are not intended for safe and proper assembly or disassembly of equipment. The illustrations are intended for ordering parts only.

Kubota is registered trademark.

All other brands and product names are trademarks or registered trademarks of their respective holders.

Printed in the United States of America.



Alphabetized Table of Contents

| | | |
|----------|---|----|
| 1 | 14 Pin Connector Harnesses..... | 30 |
| C | Case Drain Coupler..... | 32 |
| | Case Drain W/ Motor Guard..... | 34 |
| | Control Box (823-377C)..... | 36 |
| | Control Harness..... | 38 |
| | Control Harness Kubota Skid W/ 2-Pin Power Supply.. | 40 |
| | Couplers Large Flat Faced..... | 42 |
| | Couplers Quick Flat Faced..... | 44 |
| D | Decal Placement..... | 26 |
| H | Hitch, Pivot & Arm..... | 6 |
| | Hydraulic Cylinder (810-384C) Cross..... | 14 |
| | Hydraulic Cylinder (850-449C) Cross..... | 16 |
| L | Left/Right Rotate Hydraulics..... | 18 |
| M | Manual Tube..... | 8 |
| | Motor Drive Hydraulics..... | 20 |
| R | Rotor & Chute Components..... | 10 |
| | Rotor Wheel Components..... | 12 |
| T | Touch-up Paints - Kubota..... | 28 |
| U | Up/Down Tilt Hydraulics..... | 22 |
| V | Valve 2 Priority (810-840C)..... | 24 |
| W | Wiring Harness 14 Pin..... | 46 |

General Information

Using This Manual

This manual is divided into sections. The first section contains General Information. The remaining sections divide the machine into segments (i.e. Frames, Drives, Hydraulics, etc.) which illustrate and list all parts. A Parts Number Index is located at the back of the book.

The Kubota parts in this manual are specially designed for this machine and should be replaced with Kubota parts only.

The information in this manual is current at time of printing. Some parts may change to assure top performance.

Right-hand and left-hand as used in this manual are determined by facing the direction the machine will travel while in use.

Below is an example of two facing pages from a parts manual. Familiarize yourself with the type of information contained on these pages.

Manual Replacement Information

Replacement manuals are available. Refer to our website at www.landpride.com for additional information. Our website continues to provide the most up-to-date manuals available.

Touch-up Paint

Repaint parts where paint is worn or scratched to prevent rust. Aerosol cans and touch-up bottles with brush applicator are available through your local dealer. Also available are quart and gallon size paints. Add QT or GL to end of the Aerosol P/N.

Kubota color descriptions and part numbers are listed on the "Kubota Touch-up Paints" page in the "Decals" section of this book.



General Information

Hardware Legend

| | |
|----------|--|
| AR | As Required |
| BLADE | Blade Bolt |
| C | Cap Screw |
| CP | Cotter Pin |
| CPHSSS | Cup Point Hex Socket Set Screw |
| CPSHSS | Cup Point Square Head Set Screw |
| CPSQHSS | Cup Point Square Head Set Screw |
| CRFCHMS3 | Cross Recess Flat Countersunk Head Machine Screw |
| CRPHMS | Cross Recess Pan Head Machine Screw |
| CRPHTFS | Cross Recess Pan Head Thread Forming |
| CRRHMS | Cross Recess Round Head Machine Screw |
| CRTHMS | Cross Recess Truss Head Machine Screw |
| CSNB | Countersunk Square Neck Bolt |
| FHMS | Flat Head Machine Screw |
| FTC | Full Thread Cap Screw |
| H | Hex Nut |
| HCLN | Hex Center Lock Nut |
| HFLCS | Hex Flange Lock Cap Screw |
| HFS | Hex Flange Screw |
| HFSLN | Hex Flange Serrated Lock Nut |
| HFSS | Hex Flange Serrated Screw |
| HHCS | Hex Head Cap Screw or Metric Bolt |
| HSBHCS | Hex Socket Button Head Cap Screw |
| HSFCHCS | Hex Socket Flat Countersunk Head Cap Screw |
| HSHCS | Hex Socket Head Cap Screw |
| HSSS | Hex Socket Head Screw |
| HTLN | Hex Top Lock Nut |
| HWHCS | Hex Washer Head Cap Screw |

| | |
|----------------|---|
| HWHMS | Hex Washer Head Machine Screw |
| HXBHCS | Hex Socket Button Head Cap Screw |
| J | Hex Jam Nut |
| JIC | 37 Degree Tapered Thread |
| L | Helical Spring Lock Washer |
| LUG | Lug Bolt |
| NFC | National Fine Cap Screw |
| NPSM | National Pipe Straight Mechanical |
| NPTF | National Pipe Taper Fuel |
| P | Wide Plain Washer |
| PHMS | Pan Head Machine Screw |
| PLOW | Plow Bolt |
| RHMS | Round Head Machine Screw |
| RHSNB | Round Head Square Neck Bolt |
| SCREW LEVELING | Leveling Screw |
| SCREW THUMB | Thumb Screw |
| SCREW WELD | Weld Screw |
| SFCHMS | Slotted Flat Countersunk Head Machine Screw |
| SFHMS | Slotted Fillister Head Machine Screw |
| SP | Special |
| SP SCREW | Special Screw |
| SQHSS | Square Head Set Screw |
| SRHMS | Slotted Round Head Machine Screw |
| SSS | Socket Set Screw |
| STCS | Self Tapping Cap Screw |
| STHMS | Slotted Truss Head Machine Screw |
| WHEEL | Wheel Studs and Hub Long Bolts |
| WING | Wing Bolt |

Replacement Hardware

The **Hardware Legend** above lists hardware abbreviations used in the parts list. All bolts and nuts are Grade 5 unless otherwise noted. The use of improper grades of hardware can result in personal injury, damage to equipment, or loss of property.

Part Number Service Coding

Within the parts list some part numbers are coded for revisions and interchangeability. See notations in revision column.

Serial Numbers

Always use the serial and model number when ordering parts. Refer to the Operator's Manual for serial number plate location.

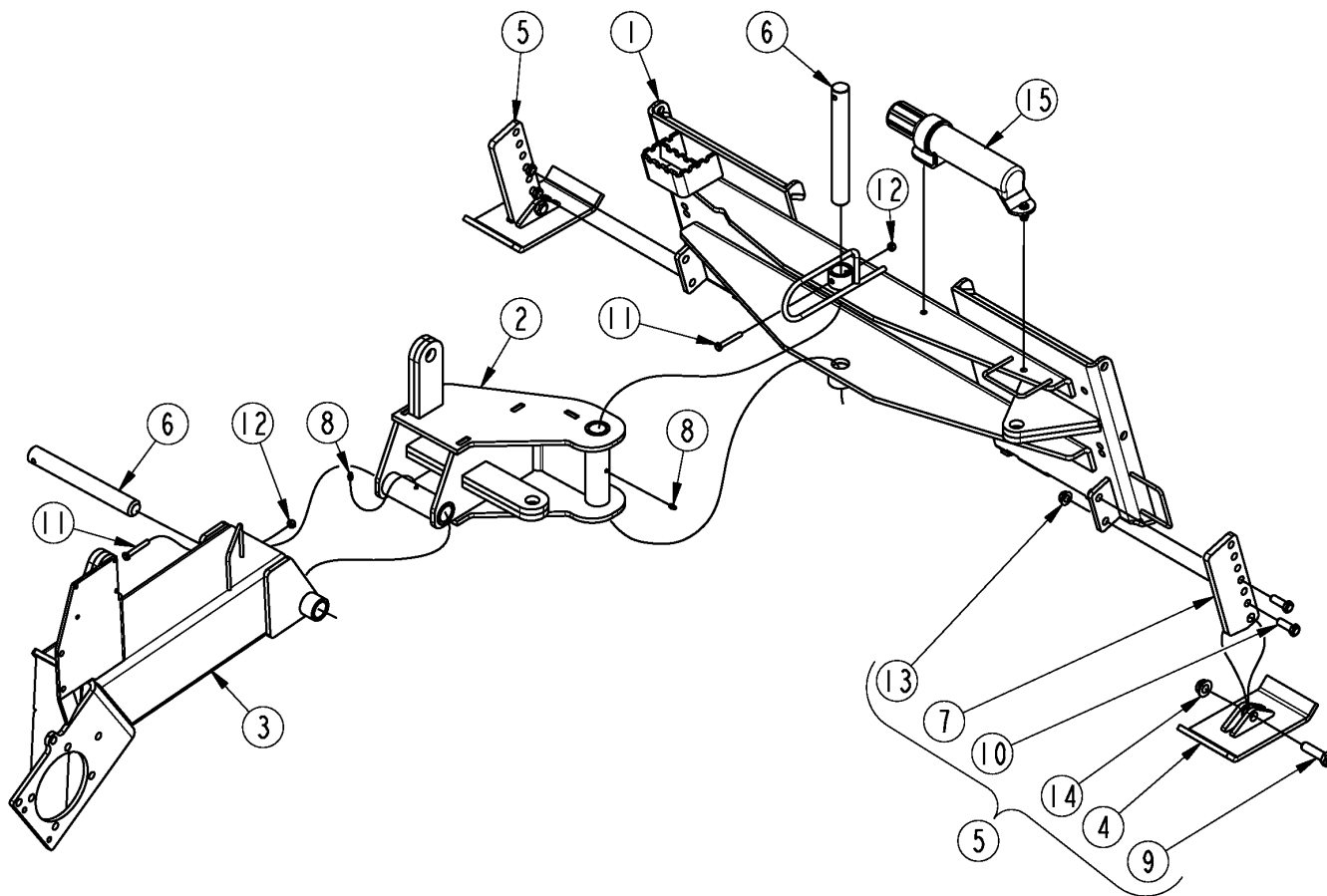
(S/N 20001+) Includes serial numbers 20001 and above (to the latest number)

(S/N 10001 to 20000) Includes serial numbers between and including 10001 and 20000

(S/N 10000-) Includes serial numbers 10000 and below (to the earliest number)

Hitch, Pivot & Arm

Applies to AP-SSG2524



35277

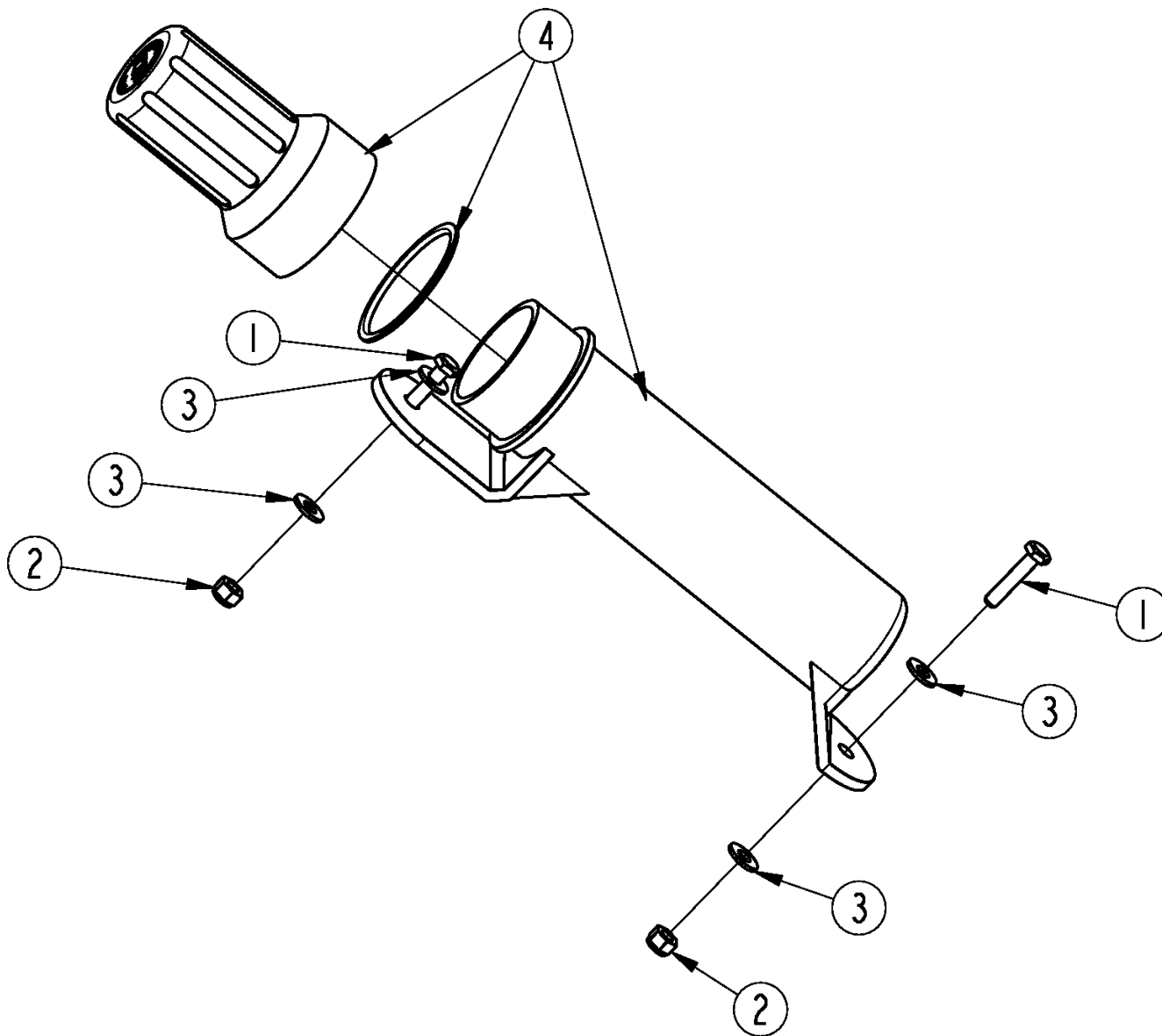
Hitch, Pivot & Arm

Applies to AP-SSG2524

| Ref | Part No. | Part Description | Comments | Revision |
|------------|-----------------|--------------------------------|-----------------|-----------------|
| | Dwg 35277 | Drawing Image Number | | |
| 1. | 328-200H | SKID HITCH STUMP GRINDER | | |
| 2. | 328-201H | SWING WELD | | |
| 3. | 328-202H | MOTOR LIFT WELD | | |
| 4. | 328-210H | SKID SHOE WELD | | |
| 5. | 328-211K | SKID SHOE ASSY | | |
| 6. | 328-406D | PIVOT PIN | | |
| 7. | 328-434D | SKID SHOE ADJUSTMENT | | |
| 8. | 800-080C | GREASE ZERK 1/4-28 THD FORMING | | |
| 9. | 802-057C | HHCS 5/8-11X2 1/4 GR5 | | |
| 10. | 802-091C | HHCS 1/2-13X1 1/2 GR5 | | |
| 11. | 802-138C | HHCS 5/16-18X2 1/4 GR5 | | |
| 12. | 803-084C | NUT HEX NYLOCK 5/16-18 PLT | | |
| 13. | 803-169C | NUT HEX FLG LOCK 1/2-13 PLT | | |
| 14. | 803-263C | NUT HEX FLANGE LOCK 5/8-11 PLT | | |
| 15. | 326-095S | MANUAL CONTAINER KIT, 1 1/4 | | |

Manual Tube

Applies to AP-SSG2524



39163

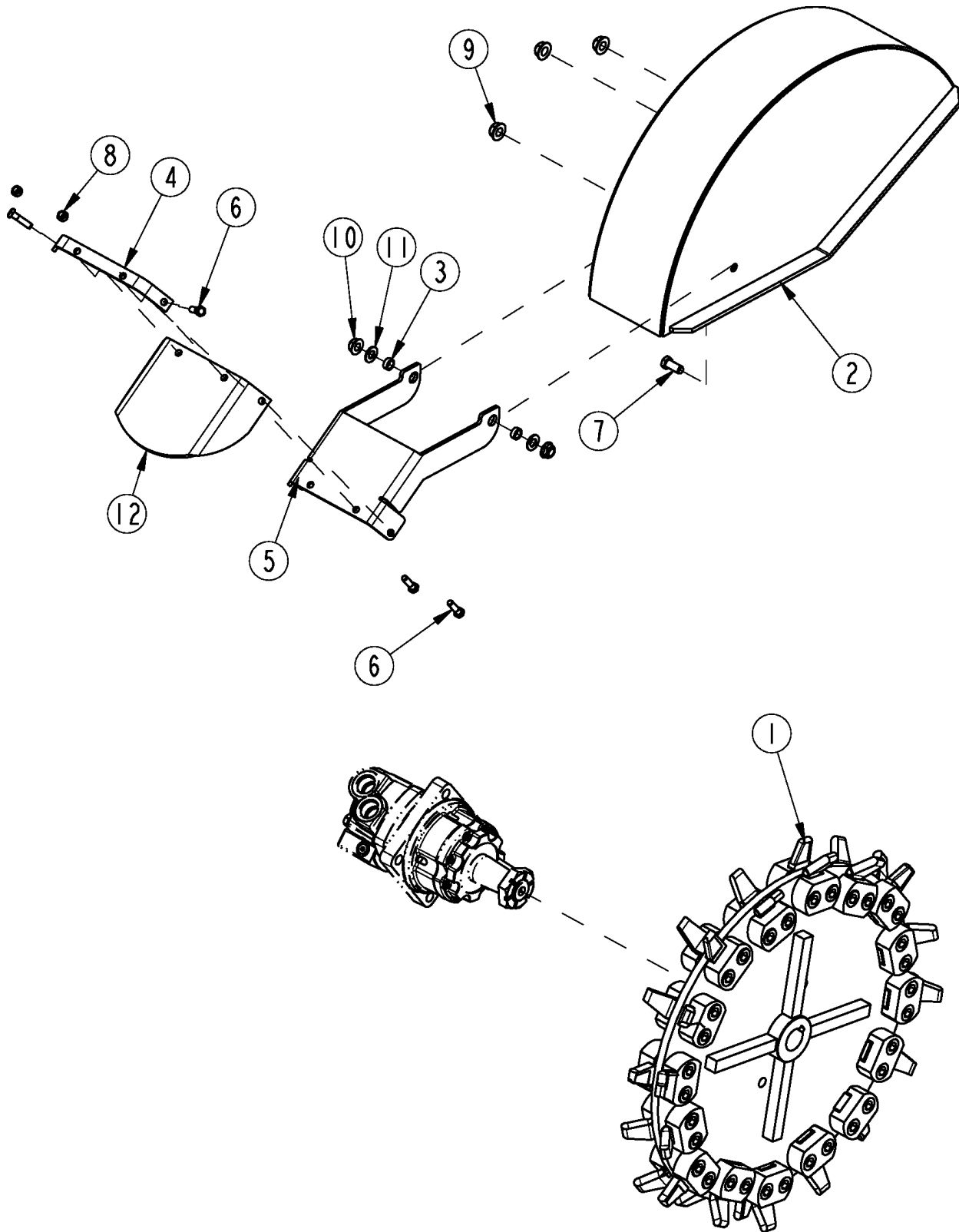
Manual Tube

Applies to AP-SSG2524

| Ref | Part No. | Part Description | Comments | Revision |
|------------|-----------------------|---|-------------------|-----------------|
| | Dwg 39163 326-095S | Image No. MANUAL CONTAINER KIT, 1 1/4 * | Complete assembly | |
| 1. | 802-224C | HHCS 1/4-20X1 1/4 GR5 | | |
| 2. | 803-255C | NUT HEX NYLOCK 1/4-20 | | |
| 3. | 804-007C | WASHER FLAT 1/4 SAE PLT | | |
| 4. | 816-504C | MANUAL STORAGE CONTAINER | | |

Rotor & Chute Components

Applies to AP-SSG2524



35278

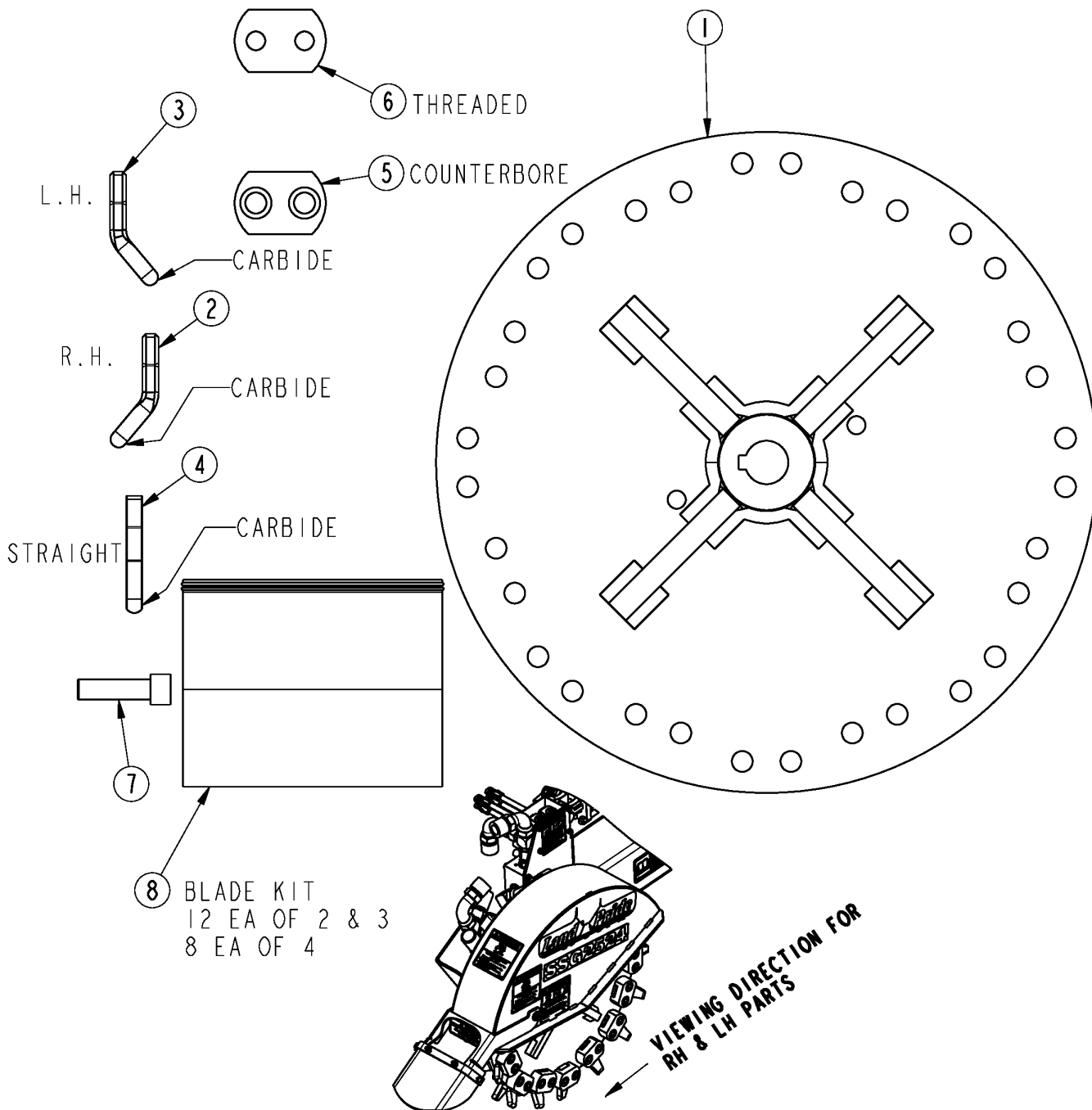
Rotor & Chute Components

Applies to AP-SSG2524

| Ref | Part No. | Part Description | Comments | Revision |
|------------|-----------------|--------------------------------|-----------------|-----------------|
| | Dwg 35278 | Drawing Image Number | | |
| 1. | 328-208K | ROTOR WHEEL ASSY | | |
| 2. | 328-209H | ROTOR SHROUD WELD | | |
| 3. | 328-404D | GUARD PIVOT | | |
| 4. | 328-436D | RUBBER GUARD RETAINER | | |
| 5. | 328-437D | CHIP GUARD | | |
| 6. | 802-010C | HHCS 5/16-18X1 1/4 GR5 | | |
| 7. | 802-080C | HHCS 7/16-14X1 GR5 | | |
| 8. | 803-084C | NUT HEX NYLOCK 5/16-18 PLT | | |
| 9. | 803-169C | NUT HEX FLG LOCK 1/2-13 PLT | | |
| 10. | 803-229C | NUT HEX FLANGE LOC 7/16-14 PLT | | |
| 11. | 804-041C | WASHER FLAT 7/16 SAE PLT | | |
| 12. | 816-759C | CHIP GUARD RUBBER | | |

Rotor Wheel Components

Applies to AP-SSG2524



35279

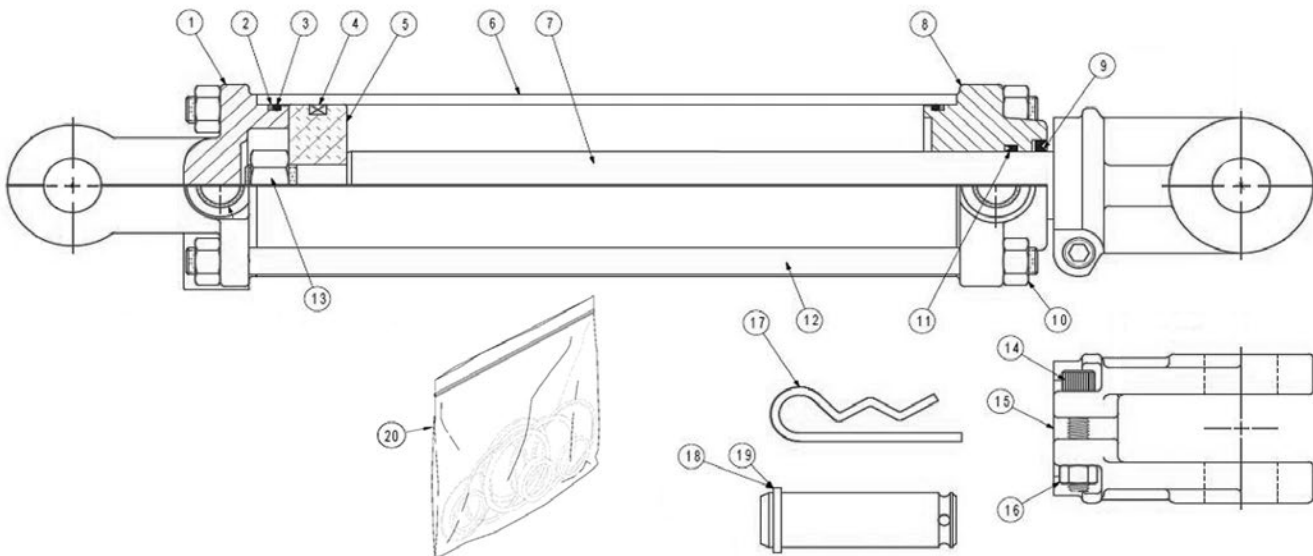
Rotor Wheel Components

Applies to AP-SSG2524

| Ref | Part No. | Part Description | Comments | Revision |
|------------|-----------------|----------------------------|--|-----------------|
| | Dwg 35279 | Drawing Image Number | | |
| 1. | 328-207H | ROTOR WHEEL WELD | | |
| 2. | 820-493C | CUT TOOTH RH CARBIDE | | |
| 3. | 820-494C | CUT TOOTH LH CARBIDE | | |
| 4. | 820-495C | CUT TOOTH STRAIGHT CARBIDE | | |
| 5. | 820-496C | CUT TOOTH MNT COUNTERBORE | | |
| 6. | 820-497C | CUT TOOTH MNT THREADED | | |
| 7. | 842-028C | HSHCS 5/8-18X2 1/4" | | |
| 8. | 328-108A | SSG2524 SERVICE BLADE KIT | 12 ea. of 820-493C & 820-494C & 8 ea. of 820-495C | |

Hydraulic Cylinder (810-384C) Cross

Applies to AP-SSG2524



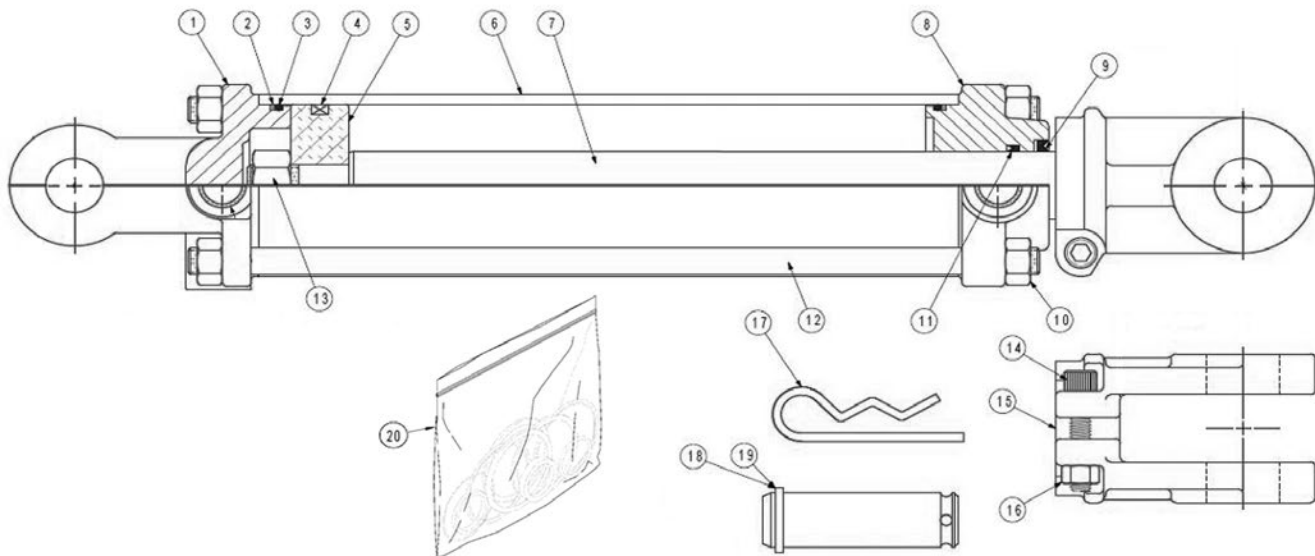
72940

Hydraulic Cylinder (810-384C) Cross**Applies to AP-SSG2524**

| Ref | Part No. | Part Description | Comments | Revision |
|------------|-----------------|---------------------------------------|--------------------------------|-----------------|
| | Dwg 810-384C | Image No. 72940 RPBY 850-449C * | 2,500 PSI | |
| 1. | 1D1205-8 | CROSS, BASE CLEVIS | | |
| 2. | N/A | CROSS BACK UP | Only found in seal kit item 20 | |
| 3. | N/A | CROSS O-RING | Only found in seal kit item 20 | |
| 4. | N/A | CROSS CROWN SEAL | Only found in seal kit item 20 | |
| 5. | 1D1401-300 | CROSS PISTON 3 BORE CYLINDER | | |
| 6. | 1D0007-850 | CROSS, TUBE | | |
| 7. | 1D0206-1075 | CROSS, ROD | | |
| 8. | 1D1157-17 | CROSS HEAD 3 BORE CYLINDER | | |
| 9. | N/A | WIPER SEAL CROSS | Only found in seal kit item 20 | |
| 10. | 2A0235-8 | CROSS NUT, TIE ROD | | |
| 11. | N/A | CROSS U-CUP | Only found in seal kit item 20 | |
| 12. | 2A0580-1100 | CROSS TIE ROD | | |
| 13. | 2A0246-12 | CROSS NUT, PISTON | | |
| 14. | 2A0079-616 | CROSS SCREW, CAP | | |
| 15. | 1D1003-5 | CROSS ROD CLEVIS | | |
| 16. | 2A0235-6 | CROSS NUT, CLEVIS & TIE ROD | | |
| 17. | 805-032C | PIN HAIR COTTER .148 WIRE | | |
| 18. | 1D1551-16275 | CROSS CLEVIS PIN 2.75"USABLE | | |
| 19. | 1D1551-16300 | CROSS CLEVIS PIN 3"USABLE | | |
| 20. | 810-009C | CYL SEAL KIT 3 (CROSS) | | |

Hydraulic Cylinder (850-449C) Cross

Applies to AP-SSG2524



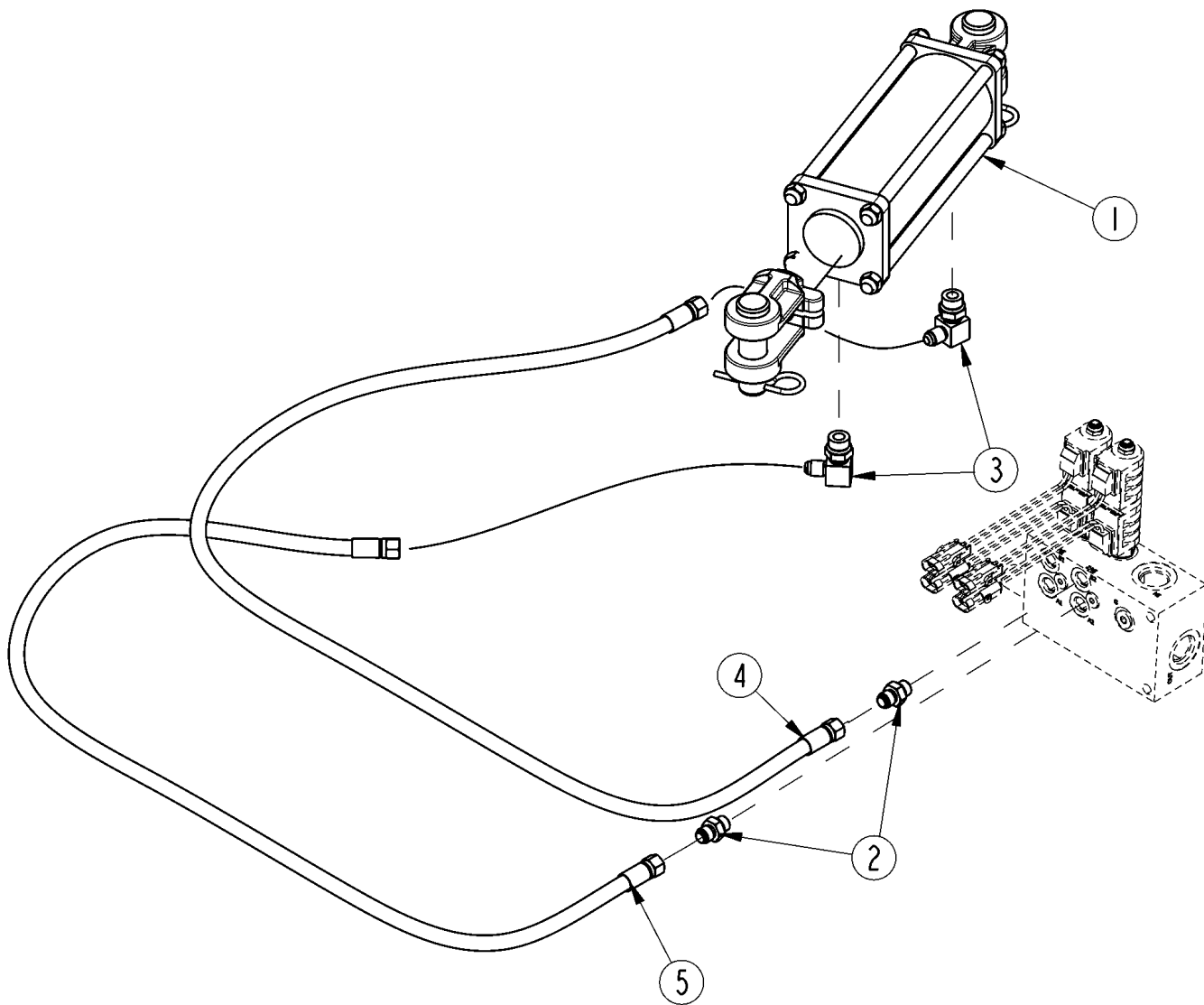
74608

Hydraulic Cylinder (850-449C) Cross**Applies to AP-SSG2524**

| Ref | Part No. | Part Description | Comments | Revision |
|-----|-----------------|--|--------------------------------|----------|
| | Dwg 850-449C | Image No. 74608 CYL 3X6X1.25 ROD (TIE ROD) * | 3,000 PSI | |
| 1. | 4C5853 | CROSS BASE CLEVIS | | |
| 2. | N/A | CROSS BACK UP | Only found in seal kit item 20 | |
| 3. | N/A | CROSS O-RING | Only found in seal kit item 20 | |
| 4. | N/A | CROSS CROWN SEAL | Only found in seal kit item 20 | |
| 5. | 4C4360 | CROSS PISTON | | |
| 6. | 1D0007-812 | CROSS TUBE | | |
| 7. | 4C2649 | CROSS ROD | | |
| 8. | 4C2444 | CROSS HEAD | | |
| 9. | N/A | WIPER SEAL CROSS | Only found in seal kit item 20 | |
| 10. | 2A0235-8 | CROSS NUT, TIE ROD | | |
| 11. | N/A | CROSS U-CUP | Only found in seal kit item 20 | |
| 12. | 2A0580-1075 | CROSS TIE ROD | | |
| 13. | 2A0246-12 | CROSS NUT, PISTON | | |
| 14. | 2A0079-616 | CROSS SCREW, CAP | | |
| 15. | 1D1013-5 | CROSS ROD CLEVIS | | |
| 16. | 2A0235-6 | CROSS NUT, CLEVIS & TIE ROD | | |
| 17. | 805-032C | PIN HAIR COTTER .148 WIRE | | |
| 18. | 1D1551-16275 | CROSS CLEVIS PIN 2.75"USABLE | | |
| 19. | 1D1551-16300 | CROSS CLEVIS PIN 3"USABLE | | |
| 20. | 850-357C | CROSS SEAL KIT | Square Cut Seals | |

Left/Right Rotate Hydraulics

Applies to AP-SSG2524



35283

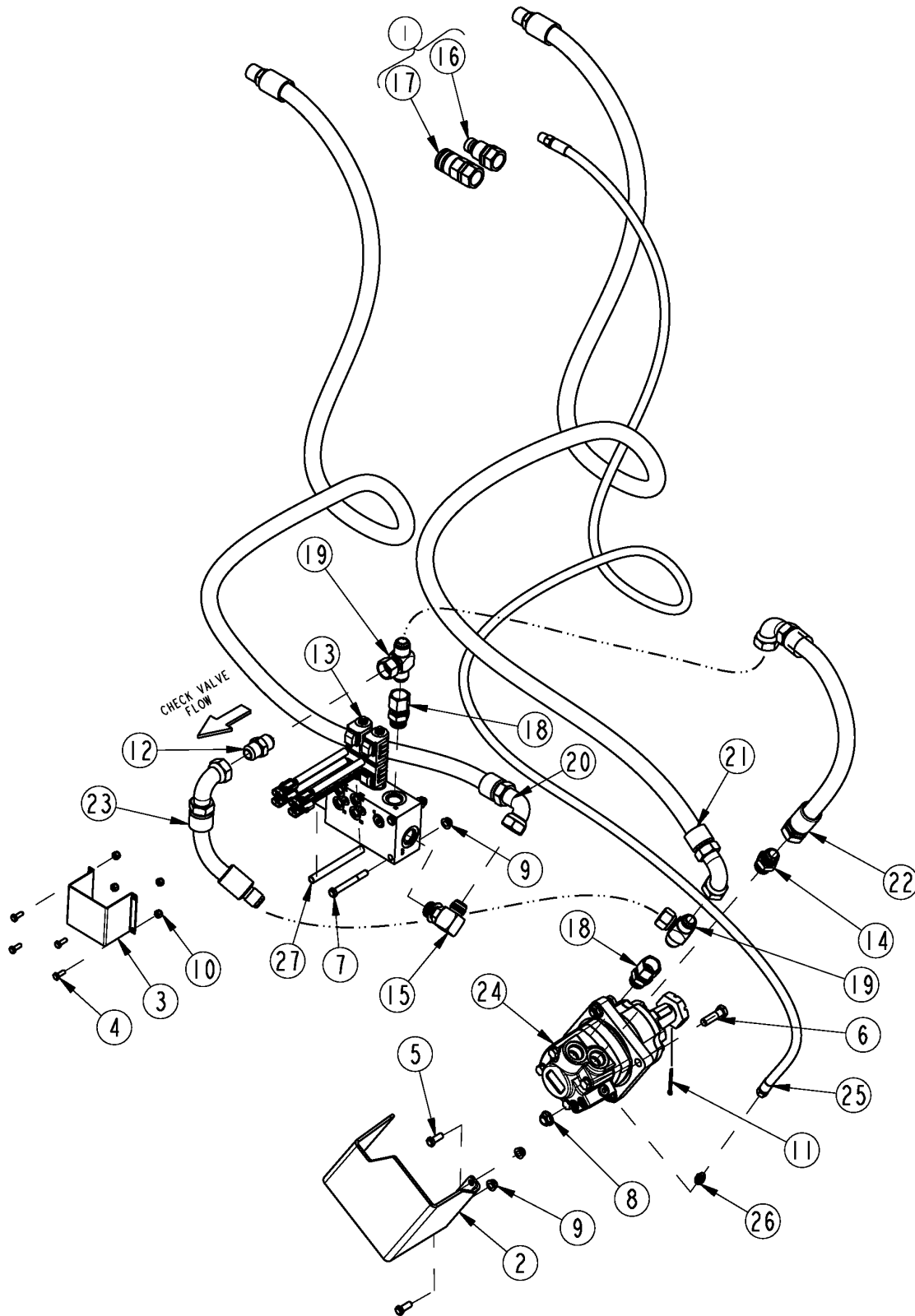
Left/Right Rotate Hydraulics

Applies to AP-SSG2524

| Ref | Part No. | Part Description | Comments | Revision |
|------------|-----------------|----------------------------|-----------------|-----------------|
| | Dwg 12345 | Drawing Image Number | | |
| 1. | 850-449C | CYL 3X6X1.25 ROD (TIE ROD) | S/N 1506433+ | |
| 1. | 810-384C | RPBY 850-449C | S/N 1506432- | |
| 2. | 811-170C | AD 9/16MORB 9/16MJIC | | |
| 3. | 811-171C | EL 3/4MORB 9/16MJIC | | |
| 4. | 841-818C | HH1/4R2 62.4 9/16FJIC | | |
| 5. | 841-819C | HH1/4R2 55.12 9/16FJIC | | |

Motor Drive Hydraulics

Applies to AP-SSG2524



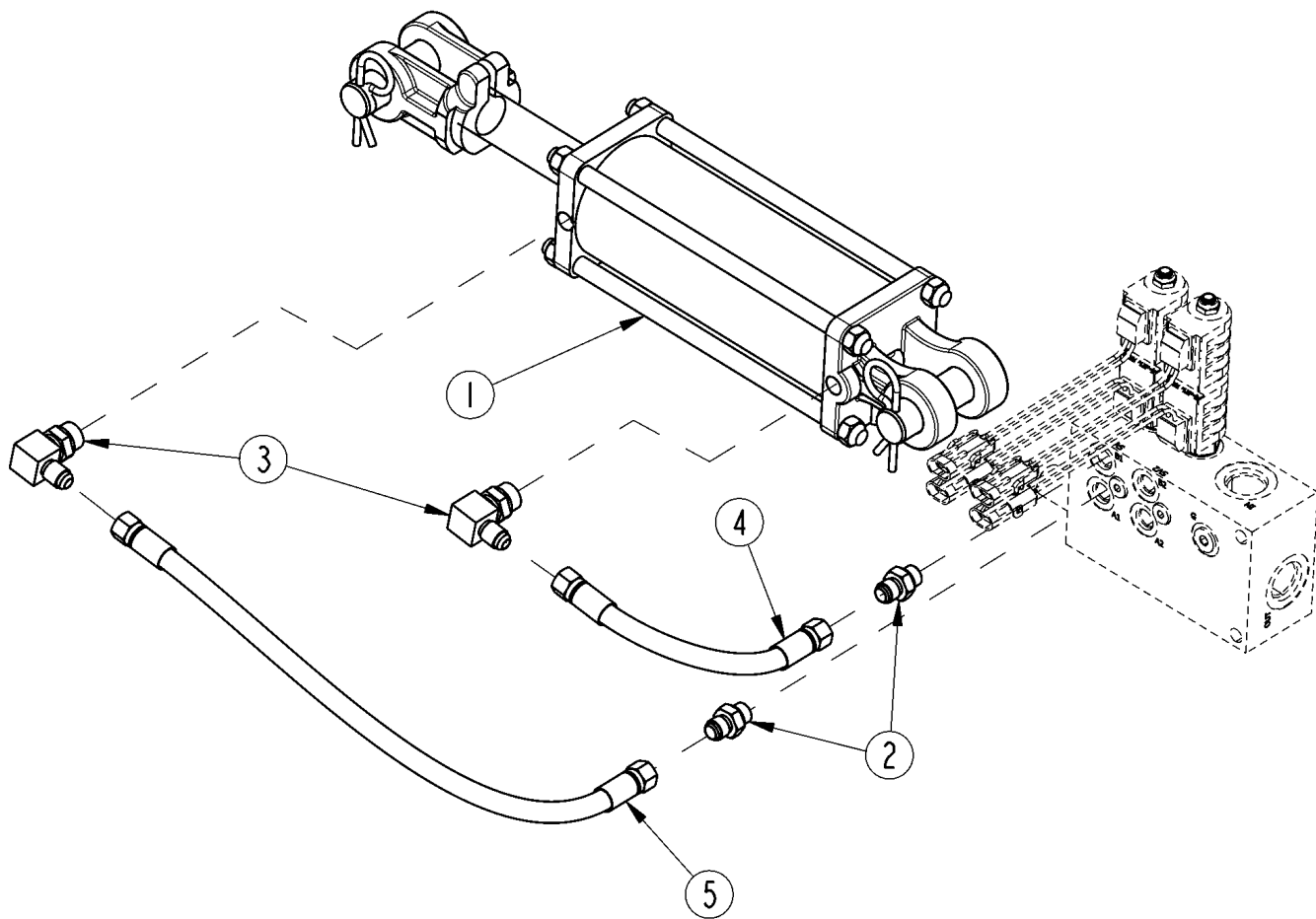
35952

Motor Drive Hydraulics**Applies to AP-SSG2524**

| Ref | Part No. | Part Description | Comments | Revision |
|-----|-----------|--------------------------------|----------|----------|
| | Dwg 35952 | Drawing Image Number | | |
| 1. | 326-627A | COUPLERS, QUICK FLAT FACED | Optional | |
| 2. | 328-290D | FITTING SHIELD | | |
| 3. | 328-435D | SKID VALVE COVER | | |
| 4. | 802-004C | HHCS 1/4-20X3/4 GR5 | | |
| 5. | 802-017C | HHCS 3/8-16X1 GR5 | | |
| 6. | 802-082C | HHCS 1/2-13X1 3/4 GR5 | | |
| 7. | 802-168C | HHCS 3/8-16X3 1/4 GR5 | | |
| 8. | 803-169C | NUT HEX FLG LOCK 1/2-13 PLT | | |
| 9. | 803-209C | NUT FLANGE LOCK 3/8-16 PLT | | |
| 10. | 803-255C | NUT HEX NYLOCK 1/4-20 | | |
| 11. | 805-246C | PIN COTTER 5/32 X 1 3/4 LG | | |
| 12. | 810-715C | VALVE 3/4 IN-LINE CHECK | | |
| 13. | 810-840C | VALVE 2 PRIORITY STUMP GRINDER | | |
| 14. | 811-408C | AD 1 1/16MORB 1 1/16MJIC | | |
| 15. | 811-411C | EL 1 1/16MJIC 1 1/16MORB | | |
| 16. | 851-947C | CUP 1 1/16FORB MALE QUICK CPLR | | |
| 16. | 811-744C | RPBY 851-947c | Obsolete | |
| 17. | 851-948C | CUP 1 1/16FORB FML QUICK CPLR | | |
| 17. | 811-745C | RPBY 851-948c | Obsolete | |
| 18. | 841-291C | AD 1 1/16MORB 1 1/16FJIC | | |
| 19. | 841-676C | TEE 1.06FJIC 1.06MJIC 1.06MJIC | | |
| 20. | 841-816C | HH3/4R16 117.5 1.06MOR1.06FJIC | | |
| 21. | 841-817C | HH3/4R16 123.5 1.06MOR1.06FJIC | | |
| 22. | 841-829C | HH3/4R16 18.6 1.06FJIC(1)90 | | |
| 23. | 841-876C | HH3/4R16 10.75 1.06MJIC90FJIC | | |
| 24. | 850-007C | HYDRAULIC MOTOR 25 GPM | | |
| 25. | 851-208C | HH1/4R2 139 7/16MJIC3/8MNPT | | |
| 26. | 851-209C | AD 7/16MORB 7/16MJIC | | |
| 27. | 990-296R | CORRUGATED LOOM, 3/8 ID | | |

Up/Down Tilt Hydraulics

Applies to AP-SSG2524



35284

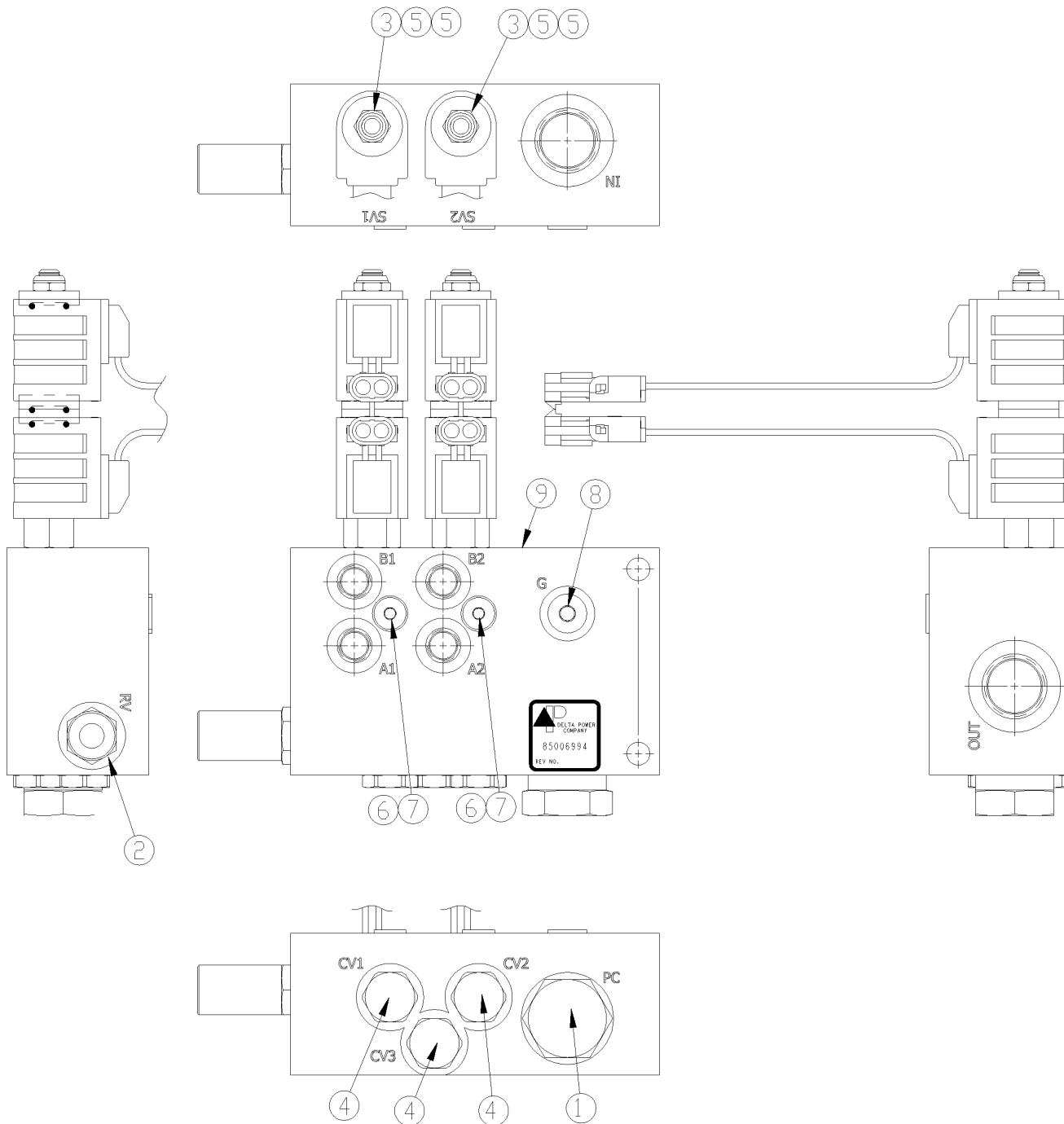
Up/Down Tilt Hydraulics

Applies to AP-SSG2524

| Ref | Part No. | Part Description | Comments | Revision |
|------------|-----------------|----------------------------|-----------------|-----------------|
| | Dwg 35284 | Drawing Image Number | | |
| 1. | 850-449C | CYL 3X6X1.25 ROD (TIE ROD) | S/N 1506433+ | |
| 1. | 810-384C | RPBY 850-449C | S/N 1506432- | |
| 2. | 811-170C | AD 9/16MORB 9/16MJIC | | |
| 3. | 811-171C | EL 3/4MORB 9/16MJIC | | |
| 4. | 841-820C | HH1/4R2 8.36 9/16FJIC | | |
| 5. | 841-821C | HH1/4R2 18.5 9/16FJIC | | |

Valve 2 Priority (810-840C)

Applies to AP-SSG2524



35860

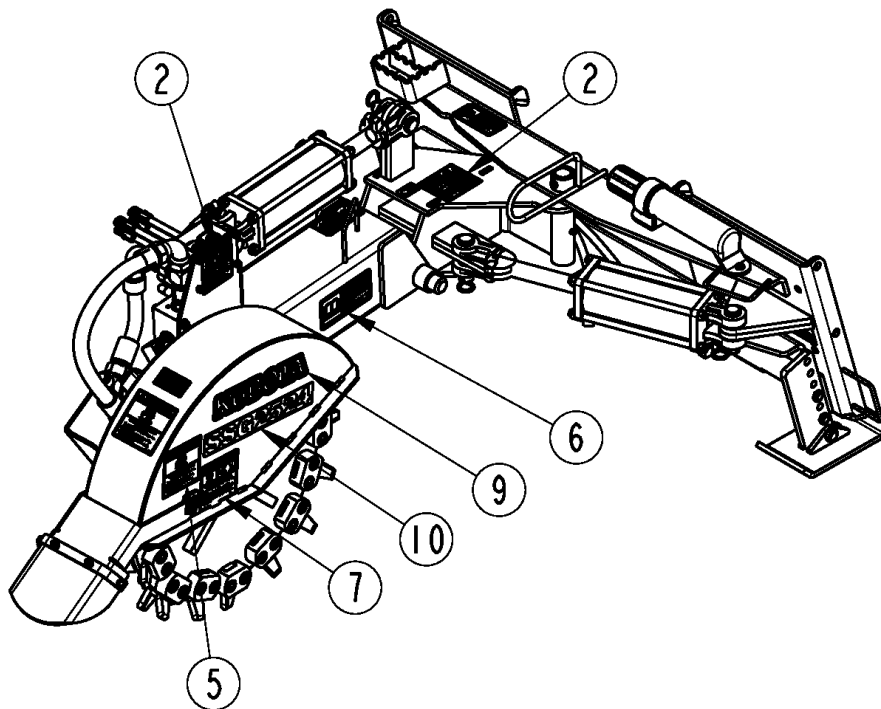
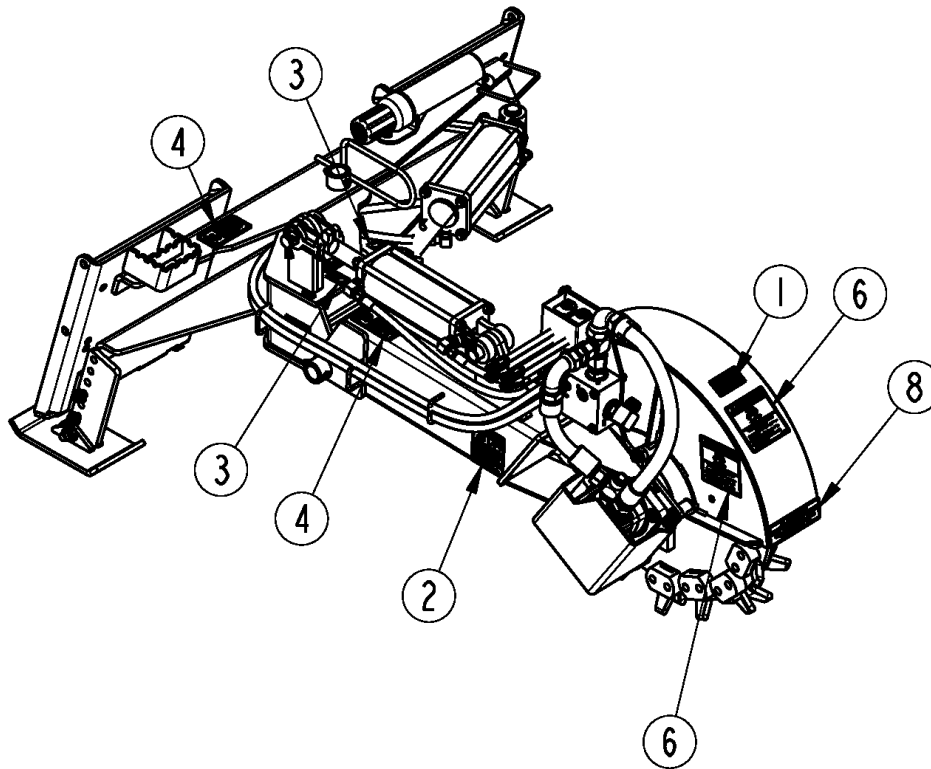
Valve 2 Priority (810-840C)

Applies to AP-SSG2524

| Ref | Part No. | Part Description | Comments | Revision |
|------------|-----------------|-------------------------------------|-----------------|-----------------|
| | Dwg 35860 | Drawing Image Number | | |
| | 810-840C | VALVE 2 PRIORITY STUMP GRINDER * | | |
| 1. | 88400016 | DELTA PRESSURE COMPENSATOR | | |
| 2. | 86020673 | DELTA RELIEF VALVE | | |
| 3. | 86020379 | DELTA 4W3P SOLENOID VALVE | | |
| 4. | 86020133 | DELTA CHECK VALVE | | |
| 5. | 38400002 | DELTA 12 VDC COIL, WITH DIODE | | |
| 6. | 61010016 | DELTA PLUG, #4 SAE, HEX SOC | | |
| 7. | 61010050 | DELTA ORFICE PLUG (DIA .047) | | |
| 8. | 61010007 | DELTA #6 SAE PLUG | | |
| 9. | 30103150 | DELTA MANIFOLD | | |

Decal Placement

Applies to AP-SSG2524



37714

Decal Placement**Applies to AP-SSG2524**

| Ref | Part No. | Part Description | Comments | Revision |
|------------|-----------------|--------------------------------|-----------------|-----------------|
| | Dwg 37714 | Drawing Image Number | | |
| 1. | N/A | | | |
| 2. | 818-339C | DECAL WARNING HIGH PRESSUR SML | | |
| 3. | 818-402C | DECAL GREASE 10 HRS RH | | |
| 4. | 818-798C | DECAL WARNING PINCH POINT GEN | | |
| 5. | 838-107C | DECAL DANGER THROWN OBJECT | | |
| 6. | 838-293C | DECAL WARNING READ MANUAL | | |
| 6. | 818-858C | RPBY 838-293C | | |
| 7. | 838-295C | DECAL ROTATNG BLADE DT55 SW407 | | |
| 8. | 848-088C | DECAL DANGER GUARD MISSING | | |
| 9. | 844-221C | DECAL, 10" KUBOTA BLOCK | | |
| 9. | 858-398C | RPBY 844-221C | Obsolete | |
| 10. | 858-490C | DECAL SSG2524 WHITE | | |

Touch-up Paints - Kubota

Applies to AP-SSG2524

No diagram associated with this Parts List

Touch-up Paints - Kubota

Applies to AP-SSG2524

| Ref | Part No. | Part Description | Comments | Revision |
|------------|-----------------|--------------------------------|----------------------------|-----------------|
| 1. | 821-070C | GLOSS BLACK SPRAY CAN | Spray can | |
| 2. | 821-070CTU | GLOSS BLACK TOUCH-UP 5OZ | Touch-up bottle with brush | |
| 3. | 821-070CQT | GLOSS BLACK QUART | Quart can | |
| 4. | 821-070CGL | GLOSS BLACK GALLON | Gallon Can | |
| 5. | 821-006C | ORANGE SPRAY CAN | Spray can | |
| 6. | 821-066CTU | ORANGE TOUCH-UP 5OZ | Touch-up bottle with brush | |
| 7. | 821-066CQT | ORANGE QUART | Quart can | |
| 8. | 821-066CGL | ORANGE GALLON | Gallon Can | |
| 9. | 821-085C | PAINT KBT DARK GRAY SPRAY CAN | Spray can | |
| 10. | 821-085CTU | PAINT KBT DARK GRAY TCH-UP 4OZ | Touch-up bottle with brush | |

14 Pin Connector Harnesses

Applies to AP-SSG2524

HARNESS A PN 823-417C

PIN OUT DETAIL

| | |
|----------|----------|
| A - PLUG | H - PLUG |
| B - BLK | J - PLUG |
| C - RED | K - PLUG |
| D - GRN | L - PLUG |
| E - WHT | M - PLUG |
| F - BRN | N - PLUG |
| G - PLUG | P - PLUG |

NOTE: 2 FUNCTION HARNESS
WILL WORK FOR THE FOLLOWING:

BOBCAT 14 PIN
GEHL 14 PIN
KOMATSU 14 PIN
MUSTANG 14 PIN
TAKEUCHI 14 PIN
VOLVO 14 PIN

WILL ALSO WORK FOR
THE FOLLOWING BY REVERSING
THE RED AND GREEN WIRES
AT THE SOLENOID:

CASE-POST 9/1/01 14 PIN
CASE-400 SERIES 14 PIN
NEW HOLLAND 14 PIN

HARNESS B PN 823-418C

PIN OUT DETAIL

| | |
|----------|----------|
| A - PLUG | H - RED |
| B - BLK | J - PLUG |
| C - PLUG | K - PLUG |
| D - PLUG | L - PLUG |
| E - WHT | M - PLUG |
| F - GRN | N - PLUG |
| G - BRN | P - PLUG |

NOTE: 2 FUNCTION HARNESS
WILL WORK FOR THE FOLLOWING:

JOHN DEERE 14 PIN

HARNESS C PN 823-419C

PIN OUT DETAIL

| | |
|----------|----------|
| A - PLUG | H - PLUG |
| B - BLK | J - PLUG |
| C - GRN | K - PLUG |
| D - WHT | L - PLUG |
| E - BRN | M - PLUG |
| F - PLUG | N - PLUG |
| G - RED | P - PLUG |

NOTE: 2 FUNCTION HARNESS
WILL WORK FOR THE FOLLOWING:

JOHN DEERE "EH" 14 PIN

35475

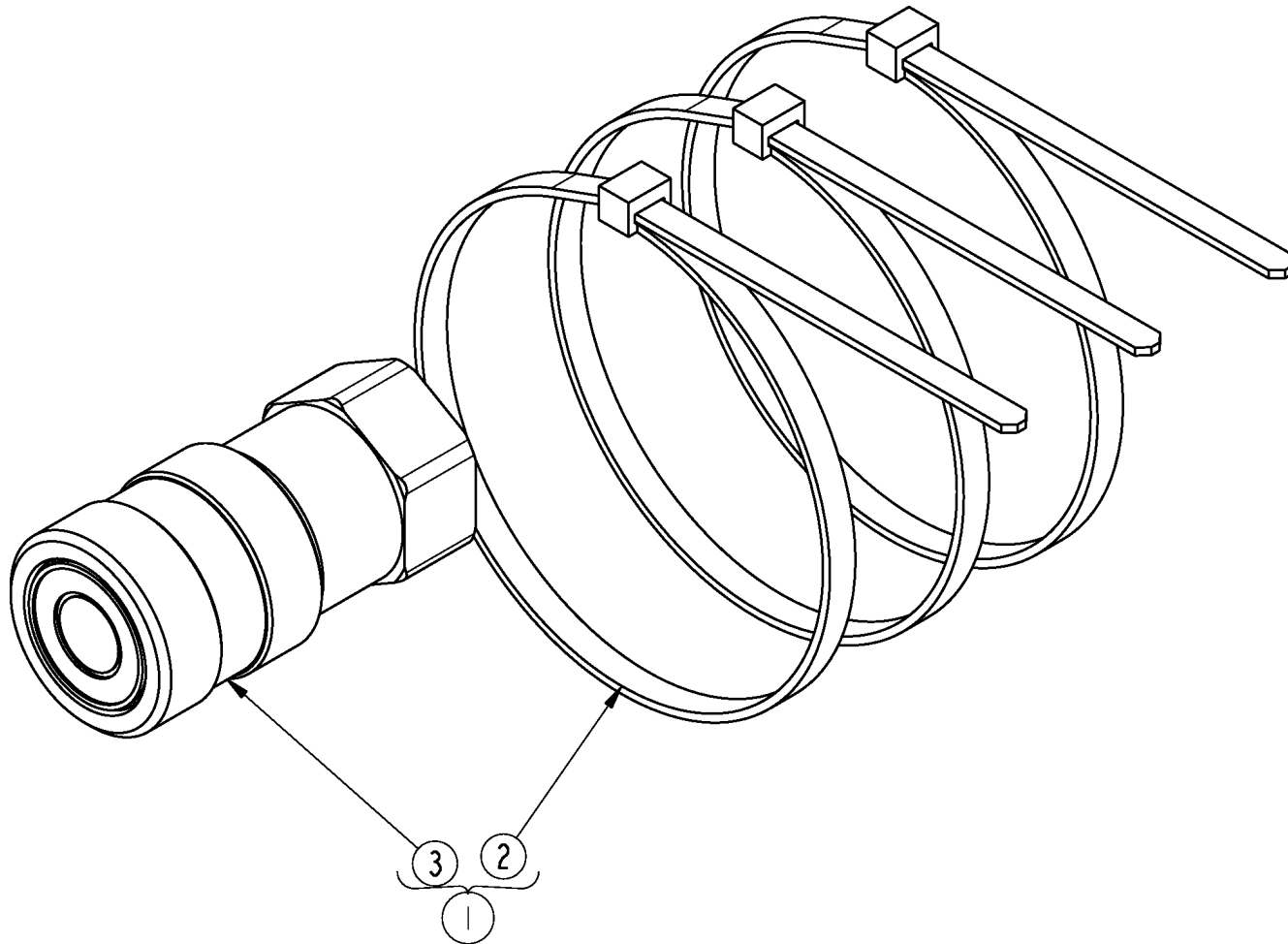
14 Pin Connector Harnesses

Applies to AP-SSG2524

| Ref | Part No. | Part Description | Comments | Revision |
|-----|-----------|--------------------------------|-----------|----------|
| | Dwg 35475 | Drawing Image Number | | |
| 1. | 231-009 | SHRINKTUBING .500" BLK | | |
| 2. | 231-375 | SHRINKTUBING .375" BLK | | |
| 3. | 252-007 | CABLE 5CON 18GA PVC GRY | | |
| 4. | 252-058 | FASSE WIRE 18GA BLK | | |
| 5. | 255-093 | WEATHERPACK CTR 2 PIN SHROUD | | |
| 6. | 255-101 | CONT W/P SOCKET 18-20GA | | |
| 7. | 255-104 | WEATHERPACK CNTR CABLE SEAL GR | | |
| 8. | 255-806 | FASSE CONN DEUT HD30 PLG W/CBL | | |
| 9. | 255-978 | FASSE CTR DEUTSCH SKT 16/18GA | | |
| 10. | 255-979 | FASSE TRM CAVITY PLUG DEUT. | | |
| 11. | 823-417C | DEUTSCH HD30 14 PIN 2 FUNCTION | Harness A | |
| 12. | 823-418C | DEUTSCH HD30 14 PIN 2 FUNCTION | Harness B | |
| 13. | 823-419C | DEUTSCH HD30 14 PIN 2 FUNCTION | Harness C | |

Case Drain Coupler

Applies to AP-SSG2524



35963

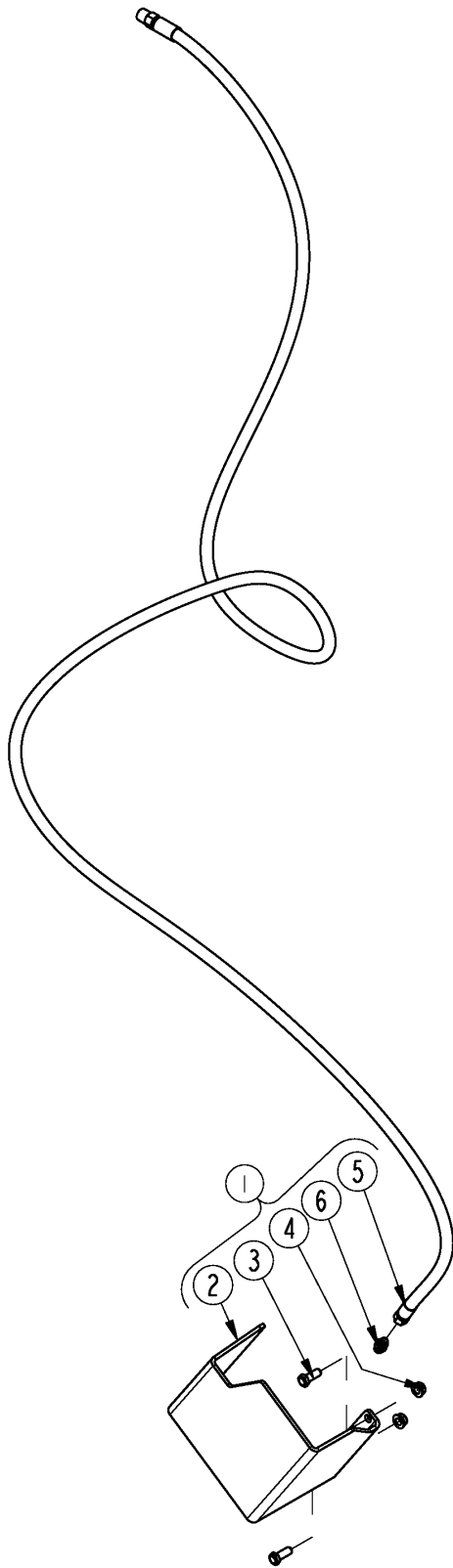
Case Drain Coupler

Applies to AP-SSG2524

| Ref | Part No. | Part Description | Comments | Revision |
|------------|-----------------|-------------------------------|-----------------|-----------------|
| | Dwg 35475 | Drawing Image Number | | |
| 1. | 326-474A | CTL/SS COUPLER PACKAGE | | |
| 2. | 800-060C | CABLE TIE .19X14.25 3DIA 50LB | | |
| 3. | 841-539C | CP 3/8 FEMALE QD 3/8FNPT | | |

Case Drain W/ Motor Guard

Applies to AP-SSG2524



35962

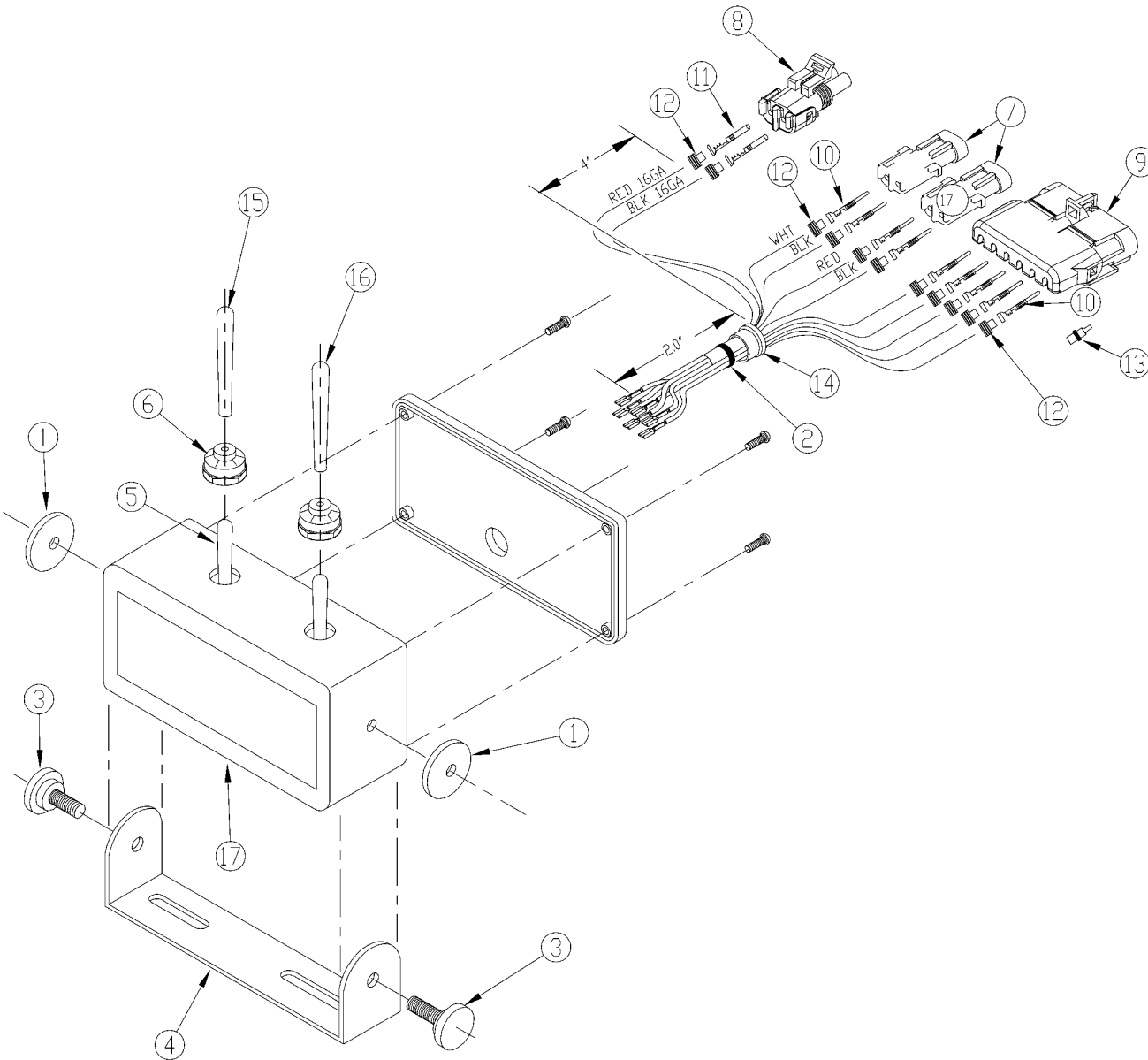
Case Drain W/ Motor Guard

Applies to AP-SSG2524

| Ref | Part No. | Part Description | Comments | Revision |
|------------|-----------------|-----------------------------|-----------------|-----------------|
| | Dwg 35962 | Drawing Image Number | | |
| 1. | 328-109K | CASE DRAIN W/GUARD BNDL | | |
| 2. | 328-290D | FITTING SHIELD | | |
| 3. | 802-017C | HHCS 3/8-16X1 GR5 | | |
| 4. | 803-209C | NUT FLANGE LOCK 3/8-16 PLT | | |
| 5. | 851-208C | HH1/4R2 139 7/16MJIC3/8MNPT | | |
| 6. | 851-209C | AD 7/16MORB 7/16MJIC | | |

Control Box (823-377C)

Applies to AP-SSG2524



33091

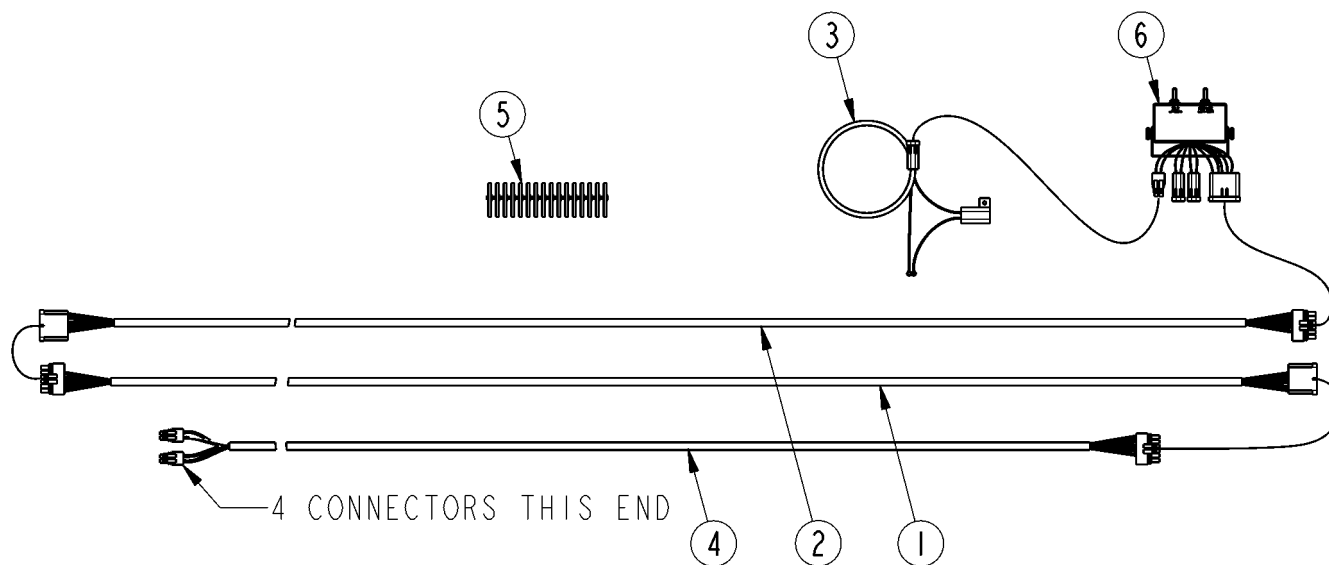
Control Box (823-377C)

Applies to AP-SSG2524

| Ref | Part No. | Part Description | Comments | Revision |
|------------|-----------------------|--|-----------------|-----------------|
| | Dwg 33091 823-377C | Drawing Image Number CONTROL BOX SNOW BLOWER * | | |
| 1. | 213-005 | FASSE WSHR RBR1ODX1/4IDX1/16TK | | |
| 2. | 800-303C | CABLE TIE 2 DIA MIN - BLK | | |
| 3. | 219-007 | FASSE SCR THUMB BLK 1/4-20X1/2 | | |
| 4. | 219-009 | FASSE BRKT ALM 4.70 #1591C | | |
| 5. | 250-007 | FASSE SW TOG DPDT 3P MOM SHORT | | |
| 6. | 250-023 | FASSE SW TOG BOOT OPN BLK | | |
| 7. | 255-092 | FASSE CNTR WP 2 PIN SHROUD | | |
| 8. | 255-093 | WEATHERPACK CTR 2 PIN SHROUD | | |
| 9. | 255-098 | CNTR WP 6 PIN SHROUD | | |
| 10. | 255-102 | WEATHERPACK CTR MALE TRM 14/16 | | |
| 11. | 255-103 | WEATHERPACK CNTR F TRM 14/16 | | |
| 12. | 255-104 | WEATHERPACK CNTR CABLE SEAL GR | | |
| 13. | 255-186 | CNTR WP CAVITY PLUG | | |
| 14. | 259-001 | FASSE GROMMET .5000D SNAP | | |
| 15. | 259-004 | FASSE SW TOG GRP VNYL WHT .187 | | |
| 16. | 259-005 | FASSE SW TOG GRP VNYL RED .187 | | |
| 17. | 304-345 | ECL 1591CBK/6060A-2X1/2SWSXTSX | | |

Control Harness

Applies to AP-SSG2524



35246

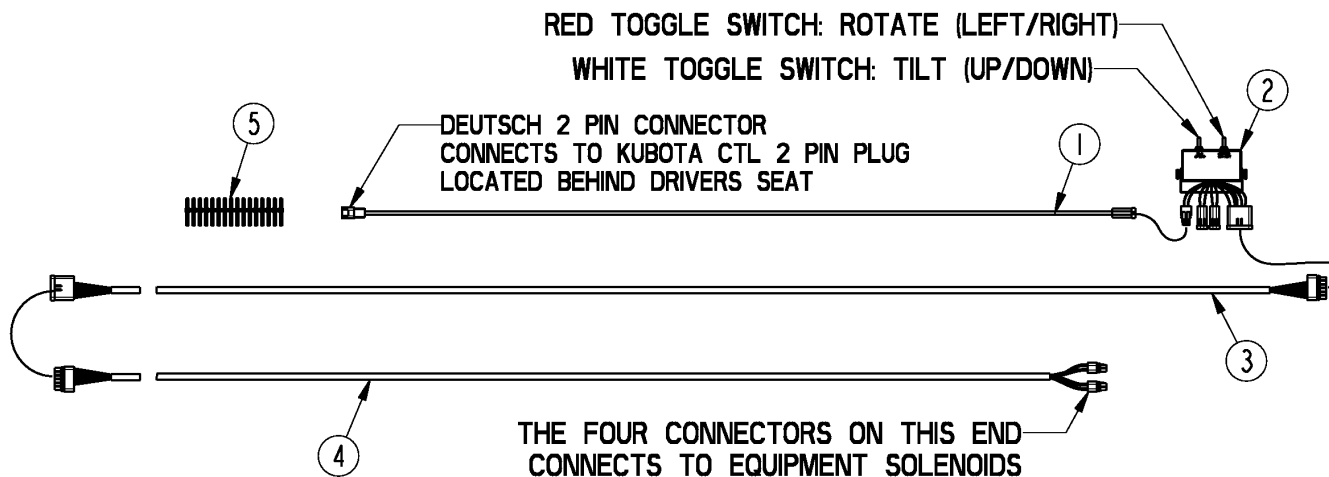
Control Harness

Applies to AP-SSG2524

| Ref | Part No. | Part Description | Comments | Revision |
|------------|-----------------------|---|-----------------|-----------------|
| | Dwg 35246 370-134A | Drawing Image Number CONTROL HARNESS SKID * | | |
| 1. | 823-385C | HARNESS EXTENSION | | |
| 2. | 823-385C | HARNESS EXTENSION | | |
| 3. | 823-386C | HARNESS, POWER | | |
| 4. | 823-405C | HARNESS SOLENOID 2 PRIORITY | | |
| 5. | 800-112C | CABLE TIE .19X7.25 1.75D 50LB | | |
| 6. | 823-377C | CONTROL BOX 2 PRIORITY | | |

Control Harness Kubota Skid W/ 2-Pin Power Supply

Applies to AP-SSG2524



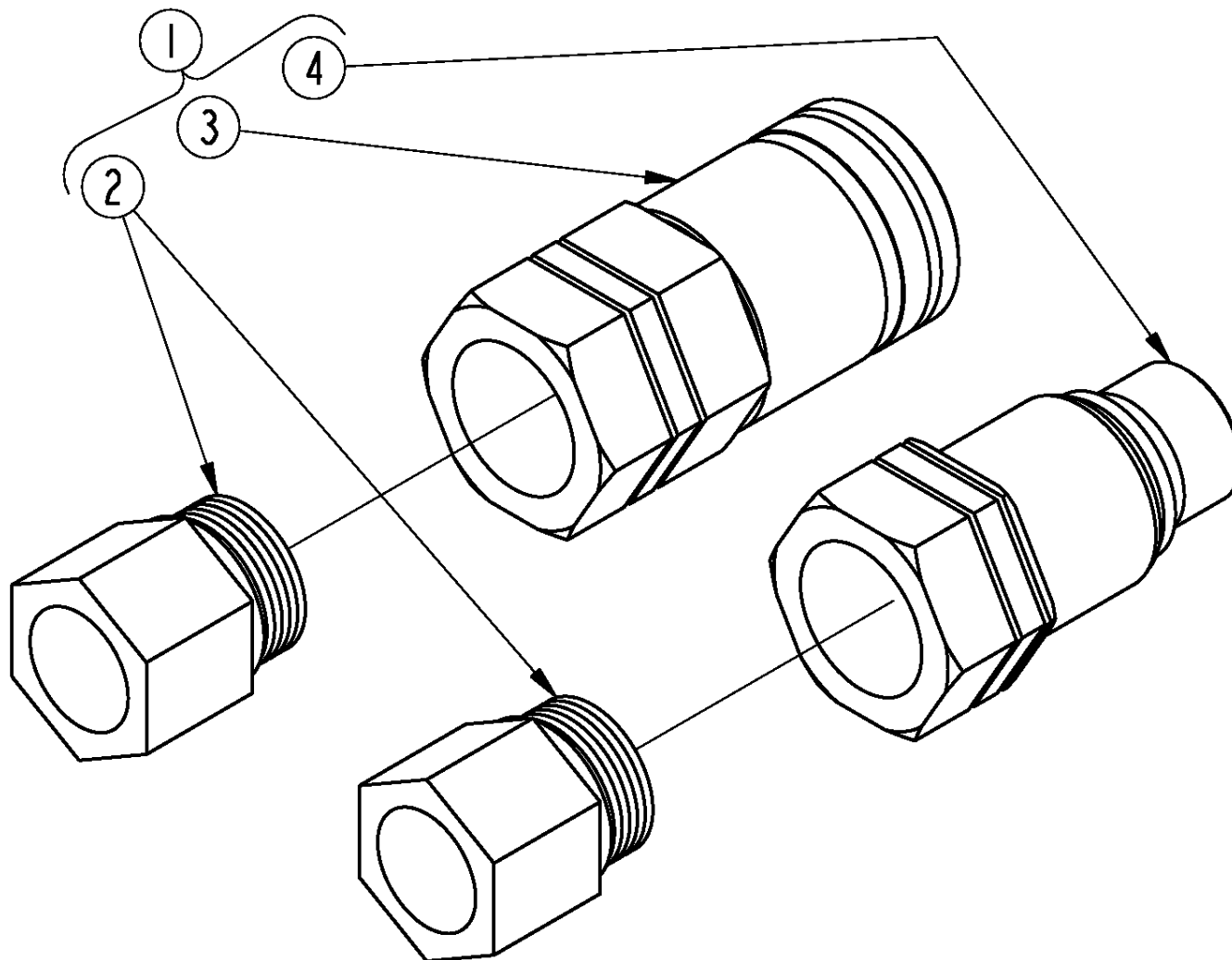
Control Harness Kubota Skid W/ 2-Pin Power Supply

Applies to AP-SSG2524

| Ref | Part No. | Part Description | Comments | Revision |
|------------|-----------------------|--|-----------------|-----------------|
| | Dwg 37144 370-434A | Drawing Image Number CONTROL HARNESS KUBOTA SKID * | | |
| 1. | 823-439C | HRN DTP04-2P 14GA 2WPS /5' | | |
| 2. | 823-377C | CONTROL BOX 2 PRIORITY | | |
| 3. | 823-385C | HARNESS EXTENSION | | |
| 4. | 823-405C | HARNESS SOLENOID 2 PRIORITY | | |
| 5. | 800-112C | CABLE TIE .19X7.25 1.75D 50LB | | |

Couplers Large Flat Faced

Applies to AP-SSG2524



37715

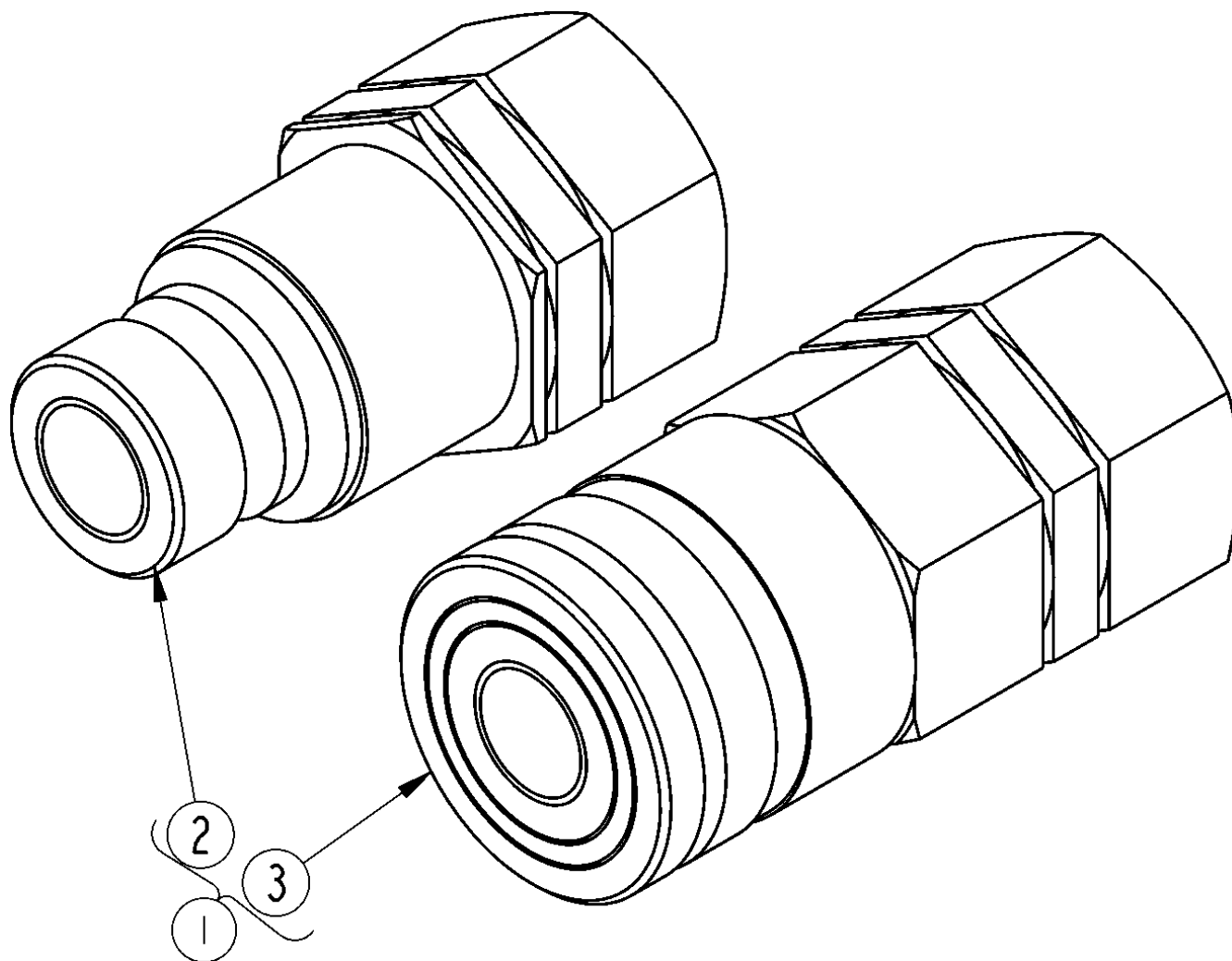
Couplers Large Flat Faced

Applies to AP-SSG2524

| Ref | Part No. | Part Description | Comments | Revision |
|------------|-----------------|----------------------------|-----------------|-----------------|
| | Dwg 37715 | Drawing Image Number | | |
| 1. | 328-113A | Couplers, Large Flat Faced | | |
| 2. | 811-570C | AD 1 5/16MORB 1 1/16FORB | | |
| 3. | 841-957C | CP 1 5/16FORB FEMALE QD | | |
| 4. | 841-958C | CP 1 5/16FORB MALE QD | | |

Couplers Quick Flat Faced

Applies to AP-SSG2524



35292

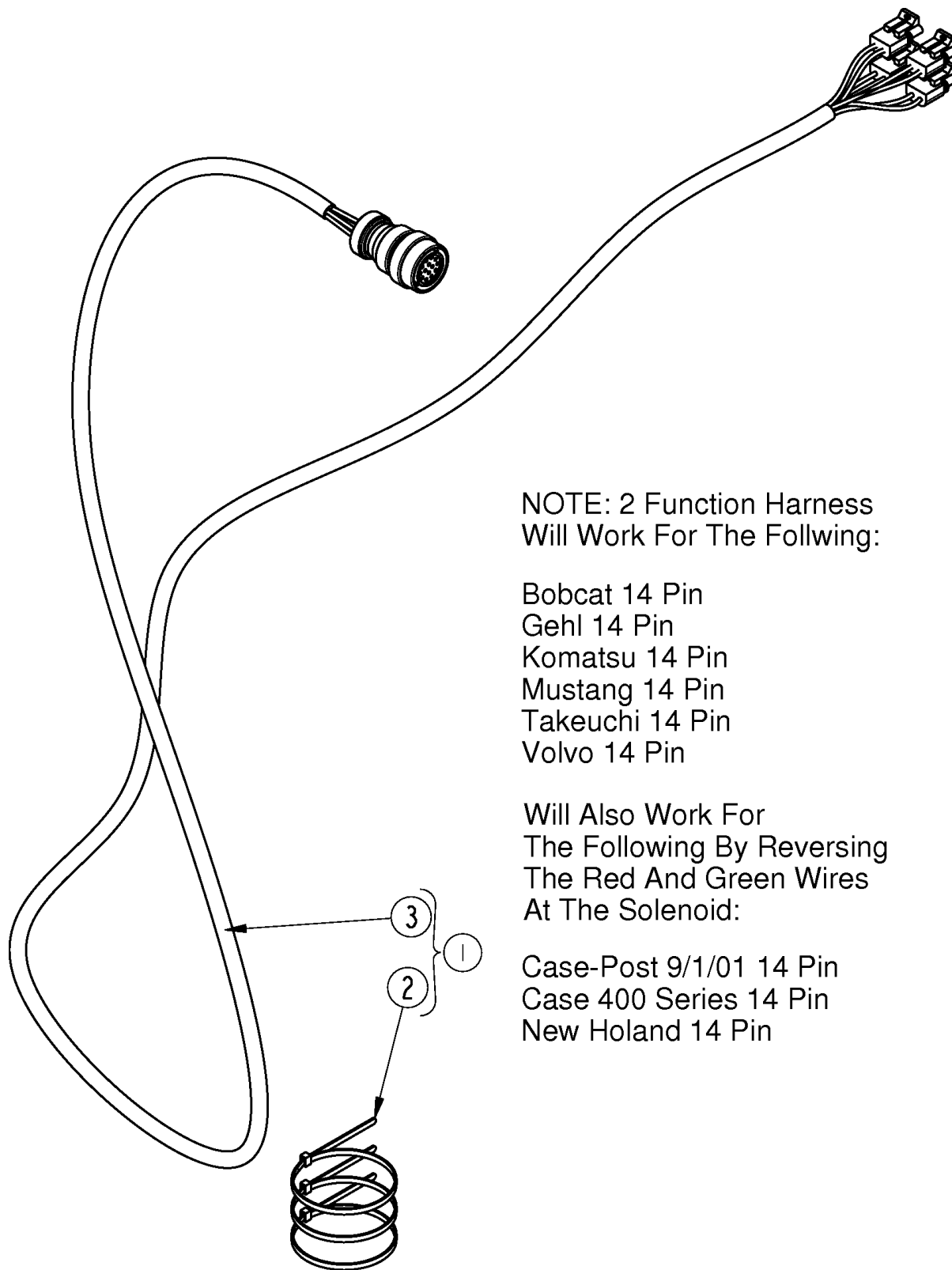
Couplers Quick Flat Faced

Applies to AP-SSG2524

| Ref | Part No. | Part Description | Comments | Revision |
|------------|-----------------|--------------------------------|-----------------|-----------------|
| | Dwg 35292 | Drawing Image Number | | |
| 1. | 326-627A | COUPLERS, QUICK FLAT FACED | | |
| 2. | 851-947C | CUP 1 1/16FORB MALE QUICK CPLR | | |
| 2. | 811-744C | RPBY 851-947c | Obsolete | |
| 3. | 851-948C | CUP 1 1/16FORB FML QUICK CPLR | | |
| 3. | 811-745C | RPBY 851-948c | Obsolete | |

Wiring Harness 14 Pin

Applies to AP-SSG2524



NOTE: 2 Function Harness
Will Work For The Following:

- Bobcat 14 Pin
- Gehl 14 Pin
- Komatsu 14 Pin
- Mustang 14 Pin
- Takeuchi 14 Pin
- Volvo 14 Pin

Will Also Work For
The Following By Reversing
The Red And Green Wires
At The Solenoid:

- Case-Post 9/1/01 14 Pin
- Case 400 Series 14 Pin
- New Holand 14 Pin

Wiring Harness 14 Pin

Applies to AP-SSG2524

| Ref | Part No. | Part Description | Comments | Revision |
|------------|-----------------|--------------------------------|-----------------|-----------------|
| | Dwg35289 | Drawing Image Number | | |
| 1. | 370-336A | WIRING HARNESS 14 PIN | | |
| 2. | 800-060C | CABLE TIE .19X14.25 3DIA 50LB | | |
| 3. | 823-417C | DEUTSCH HD30 14 PIN 2 FUNCTION | | |



Part Number Index

The Part Number Index is a numeric index of all part numbers included in this manual. The index shows what page(s) the part is used on.

| Part Number | Page | Part Number | Page | Part Number | Page |
|--------------|--------|-------------|------------|-------------|------------|
| 1D0007-812 | 17 | 61010007 | 25 | 841-291C | 21 |
| 1D0007-850 | 15 | 61010016 | 25 | 841-539C | 33 |
| 1D0206-1075 | 15 | 61010050 | 25 | 841-676C | 21 |
| 1D1003-5 | 15 | 800-060C | 33, 47 | 841-816C | 21 |
| 1D1013-5 | 17 | 800-080C | 7 | 841-817C | 21 |
| 1D1157-17 | 15 | 800-112C | 39, 41 | 841-818C | 19 |
| 1D1205-8 | 15 | 800-303C | 37 | 841-819C | 19 |
| 1D1401-300 | 15 | 802-004C | 21 | 841-820C | 23 |
| 1D1551-16275 | 15, 17 | 802-010C | 11 | 841-821C | 23 |
| 1D1551-16300 | 15, 17 | 802-017C | 21, 35 | 841-829C | 21 |
| 213-005 | 37 | 802-057C | 7 | 841-876C | 21 |
| 219-007 | 37 | 802-080C | 11 | 841-957C | 43 |
| 219-009 | 37 | 802-082C | 21 | 841-958C | 43 |
| 231-009 | 31 | 802-091C | 7 | 842-028C | 13 |
| 231-375 | 31 | 802-138C | 7 | 844-221C | 27 |
| 250-007 | 37 | 802-168C | 21 | 848-088C | 27 |
| 250-023 | 37 | 802-224C | 9 | 850-007C | 21 |
| 252-007 | 31 | 803-084C | 7, 11 | 850-357C | 17 |
| 252-058 | 31 | 803-169C | 7, 11, 21 | 850-449C | 17, 19, 23 |
| 255-092 | 37 | 803-209C | 21, 35 | 851-208C | 21, 35 |
| 255-093 | 31, 37 | 803-229C | 11 | 851-209C | 21, 35 |
| 255-098 | 37 | 803-255C | 9, 21 | 851-947C | 21, 45 |
| 255-101 | 31 | 803-263C | 7 | 851-948C | 21, 45 |
| 255-102 | 37 | 804-007C | 9 | 858-398C | 27 |
| 255-103 | 37 | 804-041C | 11 | 858-490C | 27 |
| 255-104 | 31, 37 | 805-032C | 15, 17 | 86020133 | 25 |
| 255-186 | 37 | 805-246C | 21 | 86020379 | 25 |
| 255-806 | 31 | 810-009C | 15 | 86020673 | 25 |
| 255-978 | 31 | 810-384C | 15, 19, 23 | 88400016 | 25 |
| 255-979 | 31 | 810-715C | 21 | 990-296R | 21 |
| 259-001 | 37 | 810-840C | 21, 25 | Dwg | 15, 17 |
| 259-004 | 37 | 811-170C | 19, 23 | Dwg 12345 | 19 |
| 259-005 | 37 | 811-171C | 19, 23 | Dwg 33091 | 37 |
| 2A0079-616 | 15, 17 | 811-408C | 21 | Dwg 35246 | 39 |
| 2A0235-6 | 15, 17 | 811-411C | 21 | Dwg 35277 | 7 |
| 2A0235-8 | 15, 17 | 811-570C | 43 | Dwg 35278 | 11 |
| 2A0246-12 | 15, 17 | 811-744C | 21, 45 | Dwg 35279 | 13 |
| 2A0580-1075 | 17 | 811-745C | 21, 45 | Dwg 35284 | 23 |
| 2A0580-1100 | 15 | 816-504C | 9 | Dwg 35292 | 45 |
| 30103150 | 25 | 816-759C | 11 | Dwg 35475 | 31, 33 |
| 304-345 | 37 | 818-339C | 27 | Dwg 35860 | 25 |
| 326-095S | 7, 9 | 818-402C | 27 | Dwg 35952 | 21 |
| 326-474A | 33 | 818-798C | 27 | Dwg 35962 | 35 |
| 326-627A | 21, 45 | 818-858C | 27 | Dwg 37144 | 41 |
| 328-108A | 13 | 820-493C | 13 | Dwg 37714 | 27 |
| 328-109K | 35 | 820-494C | 13 | Dwg 37715 | 43 |
| 328-113A | 43 | 820-495C | 13 | Dwg 39163 | 9 |
| 328-200H | 7 | 820-496C | 13 | Dwg35289 | 47 |
| 328-201H | 7 | 820-497C | 13 | N/A | 15, 17, 27 |
| 328-202H | 7 | 821-006C | 29 | | |
| 328-207H | 13 | 821-066CGL | 29 | | |
| 328-208K | 11 | 821-066CQT | 29 | | |
| 328-209H | 11 | 821-066CTU | 29 | | |
| 328-210H | 7 | 821-070C | 29 | | |
| 328-211K | 7 | 821-070CGL | 29 | | |
| 328-290D | 21, 35 | 821-070CQT | 29 | | |
| 328-404D | 11 | 821-070CTU | 29 | | |
| 328-406D | 7 | 821-085C | 29 | | |
| 328-434D | 7 | 821-085CTU | 29 | | |
| 328-435D | 21 | 823-377C | 37, 39, 41 | | |
| 328-436D | 11 | 823-385C | 39, 41 | | |
| 328-437D | 11 | 823-386C | 39 | | |
| 370-134A | 39 | 823-405C | 39, 41 | | |
| 370-336A | 47 | 823-417C | 31, 47 | | |
| 370-434A | 41 | 823-418C | 31 | | |
| 38400002 | 25 | 823-419C | 31 | | |
| 4C2444 | 17 | 823-439C | 41 | | |
| 4C2649 | 17 | 838-107C | 27 | | |
| 4C4360 | 17 | 838-293C | 27 | | |
| 4C5853 | 17 | 838-295C | 27 | | |

This Page Intentionally Left Blank



KUBOTA TRACTOR CORPORATION

1000 Kubota Drive, Grapevine, TX 76051

Telephone: (817) 756-1171

Western Division: 1175 S. Guild Ave., Lodi, CA 95240
Telephone: (209) 334-9910

Central Division: 14855 FAA Blvd., Fort Worth, TX 76155
Telephone: (817) 571-0900

Northern Division: 6300 at One Kubota Way, Groveport, OH 43125
Telephone: (614) 835-1100

Southeast Division: 1025 Northbrook Parkway, Suwanee, GA 30024
Telephone: (770) 995-8855

www.kubota.com
