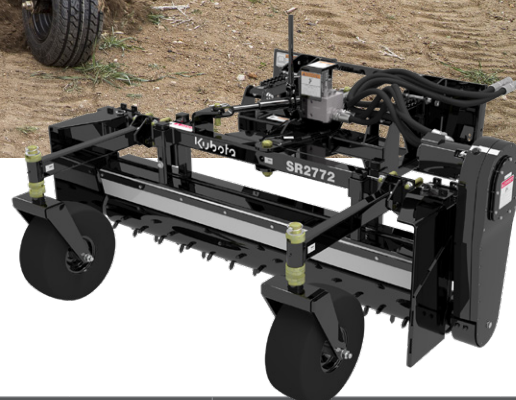


SR/SRF27 POWERED RAKES



AVAILABLE FOR: SSV65 / SSV75 / SVL65-2 / SVL75-2 / SVL95-2s / SVL97-2

- SR: Float or rigid option, Manual or hydraulic angle
- SRF: Fixed hitch - no angling
- Cast chain housing
- Carbide tipped studs

Landscapers and housing contractors can prep and level ground for seeding, remove unwanted material and debris, and rejuvenate gravel driveways and lots. Powered Rakes make excellent rental tools.



Angle/float hitch: When operated in float, it allows the gauge wheels and rake to float with the contour of the ground.

Carbide tipped studs and bi-directional roller with variable speed enables more complete finish and control.



| | SR2772 | SR2790 | SRF2772 | SRF2790 |
|--|--|---|-----------------------|-----------------------|
| Hydraulic Flow Requirements (lpm) | 12-24 gpm (45.4-90.8) | 15-24 gpm (56.8-90.8) | 12-24 gpm (45.4-90.8) | 15-24 gpm (56.8-90.8) |
| Hydraulic Pressure Range (MPa) | 2250 to 3500 psi (15.51-24.13 MPa) | | | |
| Non-Angled Working Width (m) | 72" (1.83) | 90" (2.29) | 72" (1.83) | 90" (2.29) |
| Weight (kg) | 1101 (499) | 1255 (569) | 1098 (498) | 1256 (570) |
| Direction of Travel | Bi-directional | | | |
| Material Control Blade (cm) | 2 Each- 1/2" x 5" (1.3x12.7) urethane | | | |
| Spike Roller (cm) | 9-3/8" (23.8) Diameter with 3/4" x 1-1/2" (1.9x3.8) carbide tipped studs | | | |
| Roller Speed | Variable from 200-350 rpm | | | |
| Roller Side Bearings | Roller bearings | | | |
| Drive Chain | #50 Double continuous roller chain, high tensile, enclosed in oil bath | | | |
| Side Plates | Standard, removeable with storage rack | | | |
| Skid Shoes | Replaceable | | | |
| OPTIONS | | | | |
| Hitch | Fixed Hitch | N/A | Standard | |
| | Angle Hitch | Available | N/A | |
| | Angle/Float Hitch | Available | N/A | |
| Angle Actuator for Angling 20° Left or Right | Hydraulically (cm) | 2" x 8" (5.08x20.32) Cylinder with solenoid valve | | N/A |
| | Manually | Ratchet jack | | N/A |