

RTR05 SERIES ROTARY TILLERS

Up to 26 HP | Cat. 1



Versatility to fit every need.

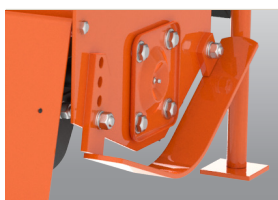
Our 05 Series Reverse Tine Rotary Tillers are perfect for popular subcompact tractors. If you are tilling your yard for reseeding or getting the garden ready for spring planting, turn your ground over efficiently with the best small tiller available!

- Cast iron bearing mounts
- Front rubber flap to keep material in
- Lower hitch clevises for easier hook up to tractor



The chain cover is stamped for strength. The formed rear deflector keeps material in and leaves a level finish and is adjustable allowing for various finish results.

2 YEAR
LIMITED GEARBOX
WARRANTY*



Control depth with seven adjustments to the skid shoes.



Four "C" shaped heat-treated tines per flange require less horsepower to move through the ground.



1-3/4" Solid steel rotor shaft provides strength.

	RTR0542	RTR0550
Horsepower	Up to 26 HP	
Hitch	Cat. 1	
Width-endplate to endplate (cm)	42" (107)	50" (127)
Overall width	46-1/2" (118)	54-1/2" (139)
Weight - lb (kg)	268 (122)	298 (135)
Number of Flanges	6	7
No. of Blades per Flange	4 C-Shape	
Blade Spacing	6-1/2"	6-3/4"
Max. Tilling Depth ^	6-1/2"	
Skid Shoe Settings	4	
Rotor Swing Diameter	13"	
Rotor Shaft Speed	230 rpm at 540 rpm PTO	
PTO Driveline	Category 2 Off-Center Shear Bolt or Slip Clutch	
Gearbox	26 HP, 540 rpm, Cast Iron Housing, Drain Plug	
Drive Chain	#80 High Tensile in Oil Bath	
Sprockets	Hardened Teeth, Splined Center	
Colors		

*See dealer for complete warranty information.

^ Tilling depth depends on conditions and fluffiness of tilled area.