

GB30 SCRAP GRAPPLE BUCKETS

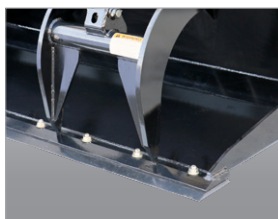
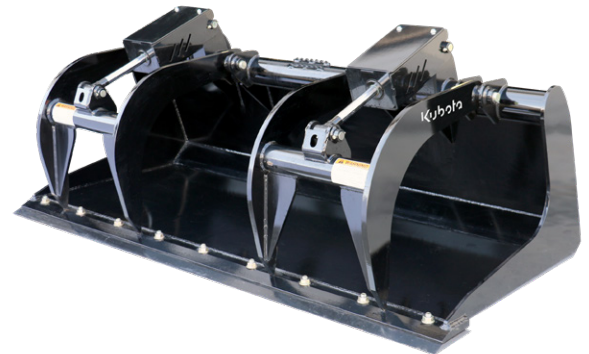
MATERIAL HANDLING



AVAILABLE FOR: SSV65 / SSV75 / SVL65-2 / SVL75-2 / SVL95-2s / SVL97-2

- 1/4" Shell material
- 1/2" End panels
- Five wear bars on bottom
- 3/4" Grapple tines
- Zinc-plated steel hydraulic lines

The GB30 is a must-have tool for demolition operations, recycling plants, salvage yards, and rental companies. It moves sharp, jagged, and bulky debris with ease.



Optional bolt-on cutting edge is reversible to extend the life of the blade and replaceable to extend the life of the GB30 and its weld-on cutting edge.

Two independent upper grapple jaws help secure uneven loads.



	GB3068	GB3074	GB3080
Weight (w/o Shields & Optional Cutting Edge) (kg)	969 lbs (440)	1,007 lbs (457)	1,074 lbs (487)
Width (m)	69" (1.75)	75" (1.91)	81" (2.06)
Closed Height (cm)		33" (83.8)	
Grapple Jaw Opening (m)		40-1/2" (1.03)	
Bucket Floor Thickness (mm)		1/4" (6)	
Bucket Side Wall Thickness (mm)		1/2" (13)	
Bucket Cutting Edge Thickness (mm)	3/4" (19)	3/4" (19)	1" (25)
Working Depth of Bucket (m)		37-1/2" (.95)	
Number of Upper Grapple Jaws		2	
Upper Grapple Tooth Thickness (mm)		3/4" (19)	
Upper Grapple Jaw Pivot Pins (mm)		Greasable 1-1/4" (2.5) pivot pins	
Hydraulic Cylinders (cm)		(2) 2-1/2" x 8" x 1-1/4" (6.4x20.3x3.2) Rod	
Hydraulic Cylinder Pivot Pins (cm)		Greasable 1" (2.54) pivot pins	