

# CL COMPACT BUCKETS



new

## AVAILABLE FOR: SCL1000

- CL136L / CL142L Standard 36" or 42" Bucket:
  - Available with bare edge, bolt-on edge or bolt-on teeth
  - CII hitch
- CL236L / CL242L Standard 36" or 42" Bucket:
  - Available with bare edge, bolt-on edge or bolt-on teeth
  - Two lever Quick-Attach
- CL148H High Capacity 48" Bucket:
  - Available with bare edge, bolt-on edge or bolt-on teeth
  - CII hitch
- CL248H High Capacity 48" Bucket:
  - Available with bare edge, bolt-on edge or bolt-on teeth
  - Two lever Quick-Attach



48" High capacity buckets make moving large volumes of material fast and efficient.

Standard capacity buckets for SCL are available in 36" or 42" with either a CII hitch or two lever hitch and multiple edge options.

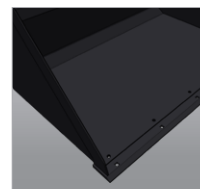


## STANDARD CAPACITY

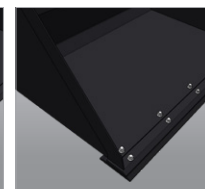
	CL136L	CL236L	CL142L	CL242L
<b>Hitch</b>	CII Hitch	2-Lever Hitch	CII Hitch	2-Lever Hitch
<b>Bucket Width (cm)</b>	36" (91)		42" (107)	
<b>Dimension (w/o teeth)</b>	36" w x 16" h x 27" d	36" w x 19" h x 29" d	42" w x 16" h x 27" d	42" w x 19" h x 29" d
<b>Shell (mm)</b>	3/16" (4.7)			
<b>Optional Teeth or Edge</b>	Bolt-on Edge (HC Model); 6 Bolt-on Teeth (HT Model)			
<b>Struck Capacity (m³)</b>	3.8 cu.ft. (.11)	4.3 cu.ft. (.12)	4.5 cu.ft. (.13)	4.9 cu.ft. (.14)
<b>Heaped Capacity (m³)</b>	4.9 (.14)	5.6 (.16)	5.8 (.164)	6.5 (.18)

## HIGH CAPACITY

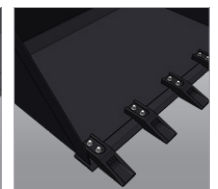
	CL148H	CL248H
<b>Hitch</b>	CII Hitch	2-Lever Hitch
<b>Bucket Width (cm)</b>	48" (124)	
<b>Dimension (w/o teeth)</b>	48" w x 21" h x 30" d	
<b>Shell (mm)</b>	3/16" (4.7)	
<b>Optional Teeth or Edge</b>	Bolt-on Edge (HC Model) 6 Bolt-on Teeth (HT Model)	
<b>Struck Capacity (m³)</b>	6.9 cu.ft. (.196)	
<b>Heaped Capacity (m³)</b>	8.9 cu.ft. (.25)	



Bare Edge



Bolt-on Edge



Bolt-on Teeth